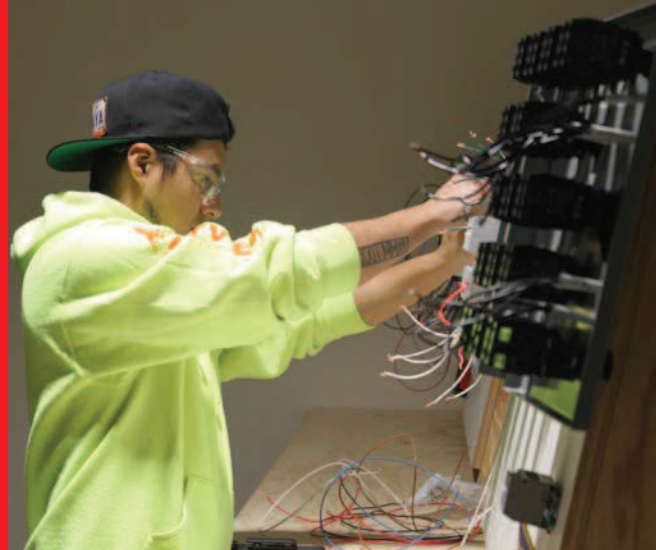


ELECTRICAL: COMMERCIAL INSIDE WIREMAN

Electricians install, maintain and repair electrical systems in and around structures. They install wiring and other electrical components such as motors, transformers, circuit breaker panels, switches and lighting by following blueprints, the National Electrical Code® and state and local codes. CITC provides a comprehensive, four-year, commercial inside wireman electrical curriculum that prepares workers for their “01” journeyman exam which allows them to perform all types of electrical work.



NOTE: IT IS CRUCIAL THAT STUDENTS HAVE REQUIRED BOOKS PRIOR TO THE FIRST CLASS MEETING. A STUDENT WHO DOES NOT HAVE BOOKS BY THE END OF THE SECOND WEEK MAY BE SENT HOME AND BE CHARGED WITH AN ABSENCE.

COMMERCIAL INSIDE WIREMAN LEVEL 1

Minimum: 201 hours per year

COMMERCIAL INSIDE WIREMAN 101: FALL QUARTER

Students will begin with an orientation for the electrical trade, jobsite safety, extensive electrical mathematics, an introduction to electrical circuits, basic electrical theory (Ohms Law, various circuits) and will begin using the National Electrical Code (NEC) and Washington State rules (RCW/WAC). *Schedule for lab dates will be handed out the first night of class each quarter.*

COMMERCIAL INSIDE WIREMAN 102: WINTER QUARTER

Students continue extensive use of the NEC and RCW/WAC's, learn how to install various device boxes, how to bend small diameter conduit, and types and uses of raceways and fittings.

COMMERCIAL INSIDE WIREMAN 103: SPRING QUARTER

Students learn about the NEC requirements for conductors and cables, begin using basic electrical drawings, review code and installation requirements for residential electrical service, and learn to use multiple pieces of electrical test equipment. Students will review RCW 19.28 and WAC 29-46B, jobsite safety practices and standards. Includes OSHA 10 Training.

REQUIRED BOOKS - COMMERCIAL INSIDE WIREMAN LEVEL 1

It is the student's responsibility to have the following book(s) on the first night of class:

NCCER Core Curriculum Trainee Guide, 5th Edition (Paperback) or NCCER Core Curriculum Trainee Guide, 5th Edition (Hardcover)	978-013-413098-9 978-0-13-413143-6
NCCER Electrical Level 1 Trainee Guide, 9th Edition (Paperback) or NCCER Electrical Level 1 Trainee Guide, 9th Edition (Hardcover)	978-013-473820-8 978-0-13-480473-6
Delmar's Standard Textbook of Electricity, 6th Edition	978-1-285-85270-6
2017 National Electric Code (NEC)	978-1-4559-1277-3
Washington State Electrical RCW/WACs	Free download available through L&I

COMMERCIAL INSIDE WIREMAN LEVEL 2

Minimum: 201 hours per year

COMMERCIAL INSIDE WIREMAN 201: FALL QUARTER

Students will complete a review of math concepts and code from the previous year, then complete NCCER Modules (with related NEC articles and RCW/WAC rules) for: Alternating Current; Motors: Theory and Application; and Electric Lighting. *Schedule for lab dates will be handed out the first night of class each quarter.*

COMMERCIAL INSIDE WIREMAN 202: WINTER QUARTER

Students will complete NCCER Modules (with related NEC articles and RCW/WAC rules) for: Conduit Bending; Pull and Junction Boxes; Conductor Installations; and Cable Trays.

COMMERCIAL INSIDE WIREMAN 203: SPRING QUARTER

Students will complete NCCER Modules (with related NEC articles and RCW/WAC rules) for: Conductor Terminations and Splices; Grounding and Bonding; Circuit Breakers and Fuses; and Control Systems – Fundamental Concepts. Also included is a review of green building best practices and alternative energy sources.

REQUIRED BOOKS - COMMERCIAL INSIDE WIREMAN LEVEL 2

It is the student's responsibility to have the following book(s) on the first night of class:

NCCER Electrical Level 2 Trainee Guide, 9th Edition (Paperback) or NCCER Electrical Level 2 Trainee Guide, 9th Edition (Hardback)	978-013-473821-5 978-0-13-480472-9
Delmar's Standard Textbook of Electricity, 6th Edition	978-1-285-85270-6
NCCER Your Role in the Green Environment, Trainee Guide, 3rd Ed.	978-0-13-294863-0
Soares Book on Grounding and Bonding, 13th Edition (NEC 2017)	978-1890659738
2017 National Electric Code (NEC)	978-1-4559-1277-3
Washington State Electrical RCW/WACs	Free download available through L&I

NCCER BOOKSTORE

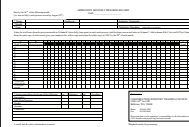
Enter code
CITC-WA
to receive 20% off
your NCCER books

20%
OFF

*Includes free shipping
on your first order*

www.nccer.org/bookstore

APPRENTICESHIP MONTHLY WORK LOGS



Apprenticeship monthly work logs can be submitted to the apprenticeship department via email: worklogs@citcwa.org; fax: (425) 289-0085; mail to the CITC main office: 1930 116th Ave NE Bellevue, WA 98004; or in person to the CITC front office.

COMMERCIAL INSIDE WIREMAN LEVEL 3

Minimum: 201 hours per year

COMMERCIAL INSIDE WIREMAN 301: FALL QUARTER

Students will complete NCCER Modules (with related NEC articles and RCW/WAC rules) for: Load Calculations - Branch and Feeders; Conductor Selection, Sizing and Voltage Drop Calculations; Overcurrent Protection; Distribution Equipment and Transformers; Commercial Electrical Services (including commercial load calculations); Practical Applications of Lighting; Hazardous Locations; and Electrical Transformers. *Schedule for lab dates will be handed out the first night of class each quarter.*

COMMERCIAL INSIDE WIREMAN 302: WINTER QUARTER

Students will complete NCCER modules (with related NEC articles and RCW/WAC rules) for: Distribution Equipment (continuation from previous quarter); Commercial Electrical Services (continuation from previous quarter); Basic Electronic Theory and Electrical Transformers; Transformers – Single Phase, Three Phase, and Specialty Transformers; and Healthcare Facilities.

COMMERCIAL INSIDE WIREMAN 303: SPRING QUARTER

Students will complete NCCER modules (with related NEC articles and RCW/WAC rules) for: Healthcare Facilities (continuation from previous quarter); Communication Cabling; Practical Applications of Lighting; Voice, Data and Video; Heat Tracing and Freeze Protection; and Medium Voltage Terminations.

REQUIRED BOOKS - COMMERCIAL INSIDE WIREMAN LEVEL 3

It is the student's responsibility to have the following book(s) on the first night of class:	
NCCER Electrical Level 3 Trainee Guide, 9th Edition	978-013-473823-9
NCCER Electrical Level 4 Trainee Guide, 9th Edition	978-013-473822-2
Delmar's Standard Textbook of Electricity, 6th Edition	978-1-285-85270-6
2017 National Electric Code (NEC) Book	978-1-4559-1277-3
Washington State Electrical RCW/WACs	Free download available through L&I

COMMERCIAL INSIDE WIREMAN LEVEL 4

Minimum: 201 hours per year

COMMERCIAL INSIDE WIREMAN 401: FALL QUARTER

Students will embark on a detailed study of NEC Article 430 - Motors, Motor Circuits and Controllers; motor theory and associated calculations; and other articles throughout the code pertaining to the installation of motors, controls and their circuits and feeders. Students will also be using NCCER modules (with related NEC articles and RCW/WAC rules) concerning: Motor Controls; Motor Calculations; Health Care Facilities; Practical Applications of Lighting; Commercial Electrical Services; Fire Alarm Systems; Heat Tracing and Freeze Protection; and HVAC Controls. Students will begin building live motor control projects. *Schedule for lab dates will be handed out the first night of class each quarter.*

COMMERCIAL INSIDE WIREMAN 402: WINTER QUARTER

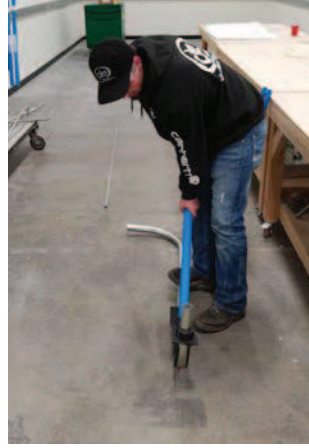
Students will continue building live motor control projects using motor control drawings in order to understand applications to different industries. Students will complete approximately 25 Lab projects and a group motor control project.

COMMERCIAL INSIDE WIREMAN 403: SPRING QUARTER

Students will undertake a detailed study of NEC Articles 500, 501, 502, 503 and the introduction to the definitions of classified areas and hazardous locations. An extensive, comprehensive review prepares students for their journeyman exam.

REQUIRED BOOKS - COMMERCIAL INSIDE WIREMAN LEVEL 4

It is the student's responsibility to have the following book(s) on the first night of class:	
NCCER Electrical Level 3 Trainee Guide, 9th Edition	978-013-473823-9
NCCER Electrical Level 4 Trainee Guide, 9th Edition	978-013-473822-2
Delmar's Standard Textbook of Electricity, 6th Edition	978-1-285-85270-6
2017 National Electric Code (NEC) Book	978-1-4559-1277-3
Mike Holt's 2017 Guide to Electrical Exam Prep	978-0-9863534-9-9
Washington State Electrical RCW/WACs	Free download available through L&I



ELECTRICAL INSTRUCTORS

As a part of our dedication and commitment to training, we take pride in delivering top quality instructors. CITC's instructors are highly skilled journey-level workers who bring their knowledge and years of trade experience into the classroom. All CITC instructors have been certified certification by the National Center for Construction Education and Research.

Sinjin Anterola started in the trade in 1996. CITC faculty member since 2016.

Jeffrey Ault started in the trade in 1996. CITC faculty member since 2016.

Fred Bedell started in the trade in 1984. CITC faculty member since 2015.

Tom Bryant started in the trade in 1993. CITC faculty member since 2016.

Richard Craig started in the trade in 1982. Technical College graduate in 1984. CITC faculty member since 2017. Awarded 2018/2019 CITC Eastern Washington Craft Training Instructor of the Year.

Chester Garrett started in the trade in 1966. Eleven years of teaching experience. CITC faculty member since 2015.

Bruce Flemins started in the trade in 1994. CITC faculty member since 2018.

Joel Godvin started in the trade in 1992. CITC faculty member since 2018.

Robert Grigoryan started in the trade in 1997. Mechanical engineering graduate, 1985. Nuclear Plant Engineering graduate, 1990. CITC faculty member since 2013.

Rick Hansen started in the trade in 1971. CITC faculty member since 2015.

Joseph Harrison started in the trade in 1999. CITC faculty member since 2018.

Kory Howard started in the trade in 2003. CITC graduate in 2006. CITC faculty since 2017.

Nathan Howat started in the trade in 2003. Apprenticeship graduate in 2006. Vice President of Blue Mountain Electric. CITC faculty member since 2017.

Jerry Katona started in the trade in 1965. Graduated from North Seattle Community College in 1976 with degree in electrical theory. Administrator license in 1981 and Master Electrician license in 2003. CITC faculty member since 2017.

*Electrical Instructors
continued on Page 14*

Commercial Inside Wireman Schedule & Tuition

Eastern Washington Region

COMMERCIAL INSIDE WIREMAN LEVEL 1							
Pasco	101	Fall	4 wk/81 hr	Fri/Sat	8a-5p	September 20 & 21; October 18 & 19; November 15 & 16; December 20 & 21 + Assignments	Tuition: \$1,125
Pasco	102	Wtr	3 wk/60 hr	Fri/Sat	8a-5p	January 24 & 25; February 21 & 22; March 20 & 21 + Assignments	Tuition: \$1,125
Pasco	103	Spr	3 wk/60 hr	Fri/Sat	8a-5p	April 24 & 25; May 15 & 16; June 12 & 13 + Assignments	Tuition: \$1,125
Spokane 1A	101	Fall	4 wk/81 hr	Fri/Sat	8a-5p	September 20 & 21; October 18 & 19; November 15 & 16; December 20 & 21 + Assignments	Tuition: \$1,125
Spokane 1A	102	Wtr	3 wk/60 hr	Fri/Sat	8a-5p	January 24 & 25; February 21 & 22; March 20 & 21 + Assignments	Tuition: \$1,125
Spokane 1A	103	Spr	3 wk/60 hr	Fri/Sat	8a-5p	April 17 & 18; May 15 & 16; June 19 & 20 + Assignments	Tuition: \$1,125
Spokane 1B	101	Fall	4 wk/81 hr	Fri/Sat	8a-5p	September 13 & 14; October 11 & 12; November 8 & 9; December 13 & 14 + Assignments	Tuition: \$1,125
Spokane 1B	102	Wtr	3 wk/60 hr	Fri/Sat	8a-5p	January 17 & 18; February 14 & 15; March 13 & 14 + Assignments	Tuition: \$1,125
Spokane 1B	103	Spr	3 wk/60 hr	Fri/Sat	8a-5p	April 24 & 25; May 8 & 9; June 12 & 13 + Assignments	Tuition: \$1,125
COMMERCIAL INSIDE WIREMAN LEVEL 2							
Pasco	201	Fall	4 wk/81 hr	Fri/Sat	8a-5p	September 13 & 14; October 11 & 12; November 8 & 9; December 13 & 14 + Assignments	Tuition: \$1,125
Pasco	202	Wtr	3 wk/60 hr	Fri/Sat	8a-5p	January 17 & 18; February 14 & 15; March 13 & 14 + Assignments	Tuition: \$1,125
Pasco	203	Spr	3 wk/60 hr	Fri/Sat	8a-5p	April 17 & 18; May 8 & 9; June 12 & 13 + Assignments	Tuition: \$1,125
Spokane 2A	201	Fall	4 wk/81 hr	Fri/Sat	8a-5p	September 6 & 7; October 4 & 5; November 1 & 2; December 6 & 7 + Assignments	Tuition: \$1,125
Spokane 2A	202	Wtr	3 wk/60 hr	Fri/Sat	8a-5p	January 10 & 11; February 7 & 8; Mar6 & 7 + Assignments	Tuition: \$1,125
Spokane 2A	203	Spr	3 wk/60 hr	Fri/Sat	8a-5p	April 3 & 4; May 1 & 2; June 5 & 6 + Assignments	Tuition: \$1,125
Spokane 2B	201	Fall	4 wk/81 hr	Fri/Sat	8a-5p	September 20 & 21; October 18 & 19; November 15 & 16; December 20 & 21+ Assignments	Tuition: \$1,125
Spokane 2B	202	Wtr	3 wk/60 hr	Fri/Sat	8a-5p	January 24 & 25; February 21 & 22; March 20 & 21 + Assignments	Tuition: \$1,125
Spokane 2B	203	Spr	3 wk/60 hr	Fri/Sat	8a-5p	April 17 & 18; May 15 & 16; June 19 & 20 + Assignments	Tuition: \$1,125
COMMERCIAL INSIDE WIREMAN LEVEL 3							
Pasco	301	Fall	4 wk/81 hr	Fri/Sat	8a-5p	September 6 & 7; October 4 & 5; November 1 & 2; December 6 & 7 + Assignments	Tuition: \$1,125
Pasco	302	Wtr	3 wk/60 hr	Fri/Sat	8a-5p	January 10 & 11; February 7 & 8; March 6 & 7 + Assignments	Tuition: \$1,125
Pasco	303	Spr	3 wk/60 hr	Fri/Sat	8a-5p	April 3 & 4; May 1 & 2; June 5 & 6 + Assignments	Tuition: \$1,125
Spokane 3A	301	Fall	4 wk/81 hr	Fri/Sat	8a-5p	September 13 & 14; October 11 & 12; November 8 & 9; December 13 & 14 + Assignments	Tuition: \$1,125
Spokane 3A	302	Wtr	3 wk/60 hr	Fri/Sat	8a-5p	January 17 & 18; February 14 & 15; March 13 & 14 + Assignments	Tuition: \$1,125
Spokane 3A	303	Spr	3 wk/60 hr	Fri/Sat	8a-5p	April 17 & 18; May 8 & 9; June 12 & 13 + Assignments	Tuition: \$1,125
Spokane 3B	301	Fall	4 wk/81 hr	Fri/Sat	8a-5p	September 27 & 28; October 25 & 26; November 22 & 23; December 20 & 21 + Assignments	Tuition: \$1,125
Spokane 3B	302	Wtr	3 wk/60 hr	Fri/Sat	8a-5p	January 31 & February 1; February 28 & 29; March 27 & 28 + Assignments	Tuition: \$1,125
Spokane 3B	303	Spr	3 wk/60 hr	Fri/Sat	8a-5p	April 24 & 25; May 29 & 30; June 19 & 20 + Assignments	Tuition: \$1,125
COMMERCIAL INSIDE WIREMAN LEVEL 4							
Pasco	401	Fall	4 wk/81 hr	Fri/Sat	8a-5p	September 6 & 7; October 4 & 5; November 1 & 2; December 6 & 7 + Assignments	Tuition: \$1,125
Pasco	402	Wtr	3 wk/60 hr	Fri/Sat	8a-5p	January 10 & 11; February 7 & 8; March 6 & 7 + Assignments	Tuition: \$1,125
Pasco	403	Spr	3 wk/60 hr	Fri/Sat	8a-5p	April 3 & 4; May 1 & 2; June 5 & 6 + Assignments	Tuition: \$1,125
Spokane	401	Fall	4 wk/81 hr	Fri/Sat	8a-5p	September 6 & 7; October 4 & 5; November 1 & 2; December 6 & 7 + Assignments	Tuition: \$1,125
Spokane	402	Wtr	3 wk/60 hr	Fri/Sat	8a-5p	January 10 & 11; February 7 & 8; March 6 & 7 + Assignments	Tuition: \$1,125
Spokane	403	Spr	3 wk/60 hr	Fri/Sat	8a-5p	April 3 & 4; May 1 & 2; June 5 & 6 + Assignments	Tuition: \$1,125



All first year classes include
OSHA 10 for Construction



Commercial Inside Wireman Schedule & Tuition

Western Washington Region

COMMERCIAL INSIDE WIREMAN LEVEL 1							
Bellevue 1A	101	Fall	15 wk/87 hr	Mon/Wed	5p-8p	September 4 - December 18	Tuition: \$1,500
Bellevue 1A	102	Wtr	11 wk/63 hr	Mon/Wed	5p-8p	January 6 - March 18	Tuition: \$1,500
Bellevue 1A	103	Spr	9 wk/51 hr	Mon/Wed	5p-8p	April 6 - June 3	Tuition: \$1,500
Bellevue 1B	101	Fall	15 wk/87 hr	Tue/Thu	5p-8p	September 3 - December 17	Tuition: \$1,500
Bellevue 1B	102	Wtr	11 wk/63 hr	Tue/Thu	5p-8p	January 7 - March 17	Tuition: \$1,500
Bellevue 1B	103	Spr	9 wk/51 hr	Tue/Thu	5p-8p	April 4 - June 2	Tuition: \$1,500
Marysville 1A	101	Fall	15 wk/87 hr	Mon/Wed	5p-8p	September 4 - December 18	Tuition: \$1,500
Marysville 1A	102	Wtr	11 wk/63 hr	Mon/Wed	5p-8p	January 6 - March 18	Tuition: \$1,500
Marysville 1A	103	Spr	9 wk/51 hr	Mon/Wed	5p-8p	April 6 - June 3	Tuition: \$1,500
Marysville 1B	101	Fall	4 wk/81 hr	Fri/Sat	8a-5p	September 6 & 7; October 4 & 5; November 1 & 2; December 6 & 7 + Assignments	Tuition: \$1,500
Marysville 1B	102	Wtr	3 wk/60 hr	Fri/Sat	8a-5p	January 3 & 4; February 7 & 8; March 6 & 7 + Assignments	Tuition: \$1,500
Marysville 1B	103	Spr	3 wk/60 hr	Fri/Sat	8a-5p	April 3 & 4; May 1 & 2; June 5 & 6 + Assignments	Tuition: \$1,500
Tacoma 1A	101	Fall	15 wk/90 hr	Mon/Wed	6p-9p	September 4 - December 16 + 1 Saturday	Tuition: \$1,500
Tacoma 1A	102	Wtr	11 wk/60 hr	Mon/Wed	6p-9p	January 6 - March 9 + 1 Saturday	Tuition: \$1,500
Tacoma 1A	103	Spr	9 wk/51 hr	Mon/Wed	6p-9p	March 30 - May 18 + 1 Saturday	Tuition: \$1,500
Tacoma 1B	101	Fall	15 wk/90 hr	Tue/Thu	6p-9p	September 3 - December 17 + 1 Saturday	Tuition: \$1,500
Tacoma 1B	102	Wtr	11 wk/60 hr	Tue/Thu	6p-9p	January 7 - March 5 + 1 Saturday	Tuition: \$1,500
Tacoma 1B	103	Spr	9 wk/51 hr	Tue/Thu	6p-9p	April 1 - May 20 + 1 Saturday	Tuition: \$1,500
Vancouver 1A	101	Fall	15 wk/87 hr	Mon/Wed	6p-9p	September 4 - December 18	Tuition: \$1,500
Vancouver 1A	102	Wtr	11 wk/63 hr	Mon/Wed	6p-9p	January 6 - March 23	Tuition: \$1,500
Vancouver 1A	103	Spr	9 wk/51 hr	Mon/Wed	6p-9p	April 6 - June 3	Tuition: \$1,500
Vancouver 1B	101	Fall	4 wk/81 hr	Fri/Sat	8a-5p	September 20 & 21; October 18 & 19; November 1 & 2; November 22 & 23; December 20 & 21 + Assignments	Tuition: \$1,500
Vancouver 1B	102	Wtr	3 wk/60 hr	Fri/Sat	8a-5p	January 17 & 18; February 7 & 8; February 28 & 29; March 20 & 21 + Assignments	Tuition: \$1,500
Vancouver 1B	103	Spr	3 wk/60 hr	Fri/Sat	8a-5p	April 17 & 18; May 8 & 9; May 22 & 23; June 5 & 6 + Assignments	Tuition: \$1,500
COMMERCIAL INSIDE WIREMAN LEVEL 2							
Bellevue 2A	201	Fall	15 wk/87 hr	Mon/Wed	5p-8p	September 4 - December 18	Tuition: \$1,500
Bellevue 2A	202	Wtr	11 wk/63 hr	Mon/Wed	5p-8p	January 6 - March 18	Tuition: \$1,500
Bellevue 2A	203	Spr	9 wk/51 hr	Mon/Wed	5p-8p	April 6 - June 3	Tuition: \$1,500
Bellevue 2B	201	Fall	15 wk/87 hr	Tue/Thu	5p-8p	September 3 - December 19	Tuition: \$1,500
Bellevue 2B	202	Wtr	11 wk/63 hr	Tue/Thu	5p-8p	January 7 - March 17	Tuition: \$1,500
Bellevue 2B	203	Spr	9 wk/51 hr	Tue/Thu	5p-8p	April 4 - June 2	Tuition: \$1,500
Marysville 2A	201	Fall	15 wk/87 hr	Mon/Wed	5p-8p	September 4 - December 18	Tuition: \$1,500
Marysville 2A	202	Wtr	11 wk/63 hr	Mon/Wed	5p-8p	January 6 - March 18	Tuition: \$1,500
Marysville 2A	203	Spr	9 wk/51 hr	Mon/Wed	5p-8p	April 6 - June 3	Tuition: \$1,500
Marysville 2B	201	Fall	4 wk/81 hr	Fri/Sat	8a-5p	September 13 & 14; October 11 & 12; November 8 & 9; December 13 & 14 + Assignments	Tuition: \$1,500
Marysville 2B	202	Wtr	3 wk/60 hr	Fri/Sat	8a-5p	January 10 & 11; February 7 & 8; March 13 & 14 + Assignments	Tuition: \$1,500
Marysville 2B	203	Spr	3 wk/60 hr	Fri/Sat	8a-5p	April 10 & 11; May 8 & 9; June 12 & 13 + Assignments	Tuition: \$1,500
Tacoma 2A	201	Fall	15 wk/90 hr	Mon/Wed	6p-9p	September 4 - December 16 + 1 Saturday	Tuition: \$1,500
Tacoma 2A	202	Wtr	11 wk/60 hr	Mon/Wed	6p-9p	January 6 - March 9 + 1 Saturday	Tuition: \$1,500
Tacoma 2A	203	Spr	9 wk/51 hr	Mon/Wed	6p-9p	March 30 - May 18 + 1 Saturday	Tuition: \$1,500
Tacoma 2B	201	Fall	15 wk/90 hr	Tue/Thu	6p-9p	September 3 - December 17 + 1 Saturday	Tuition: \$1,500
Tacoma 2B	202	Wtr	11 wk/60 hr	Tue/Thu	6p-9p	January 7 - March 5 + 1 Saturday	Tuition: \$1,500
Tacoma 2B	203	Spr	9 wk/51 hr	Tue/Thu	6p-9p	April 1 - May 20 + 1 Saturday	Tuition: \$1,500
Vancouver	201	Fall	15 wk/87 hr	Mon/Wed	6p-9p	September 4 - December 18	Tuition: \$1,500
Vancouver	202	Wtr	11 wk/63 hr	Mon/Wed	6p-9p	January 6 - March 23	Tuition: \$1,500
Vancouver	203	Spr	9 wk/51 hr	Mon/Wed	6p-9p	April 6 - June 3	Tuition: \$1,500

Commercial Inside Wireman Schedule & Tuition

Western Washington Region *continued*

COMMERCIAL INSIDE WIREMAN LEVEL 3							
Bellevue	301	Fall	15 wk/87 hr	Tue/Thu	5p-8p	September 3 - December 17	Tuition: \$1,500
Bellevue	302	Wtr	11 wk/63 hr	Tue/Thu	5p-8p	January 7 - March 17	Tuition: \$1,500
Bellevue	303	Spr	9 wk/51 hr	Tue/Thu	5p-8p	April 4 - June 2	Tuition: \$1,500
Marysville 3A	301	Fall	15 wk/87 hr	Mon/Wed	5p-8p	September 4 - December 18	Tuition: \$1,500
Marysville 3A	302	Wtr	11 wk/63 hr	Mon/Wed	5p-8p	January 6 - March 18	Tuition: \$1,500
Marysville 3A	303	Spr	9 wk/63 hr	Mon/Wed	5p-8p	April 6 - June 3	Tuition: \$1,500
Marysville 3B	301	Fall	4 wk/81 hr	Fri/Sat	8a-5p	September 13 & 14; October 11 & 12; November 8 & 9; December 13 & 14 + <i>Assignments</i>	Tuition: \$1,500
Marysville 3B	302	Wtr	3 wk/60 hr	Fri/Sat	8a-5p	January 10 & 11; February 7 & 8; March 13 & 14 + <i>Assignments</i>	Tuition: \$1,500
Marysville 3B	303	Spr	3 wk/60 hr	Fri/Sat	8a-5p	April 10 & 11; May 8 & 9; June 12 & 13 + <i>Assignments</i>	Tuition: \$1,500
Tacoma 3A	301	Fall	15 wk/90 hr	Mon/Wed	6p-9p	September 4 - December 16 + 1 <i>Saturday</i>	Tuition: \$1,500
Tacoma 3A	302	Wtr	11 wk/60 hr	Mon/Wed	6p-9p	January 6 - March 9 + 1 <i>Saturday</i>	Tuition: \$1,500
Tacoma 3A	303	Spr	9 wk/51 hr	Mon/Wed	6p-9p	March 30 - May 18 + 1 <i>Saturday</i>	Tuition: \$1,500
Tacoma 3B	301	Fall	15 wk/90 hr	Tue/Thu	6p-9p	September 3 - December 17 + 1 <i>Saturday</i>	Tuition: \$1,500
Tacoma 3B	302	Wtr	11 wk/60 hr	Tue/Thu	6p-9p	January 7 - March 5 + 1 <i>Saturday</i>	Tuition: \$1,500
Tacoma 3B	303	Spr	9 wk/51 hr	Tue/Thu	6p-9p	April 1 - May 20 + 1 <i>Saturday</i>	Tuition: \$1,500
Vancouver	301	Fall	15 wk/90 hr	Mon/Wed	6p-9p	September 4 - December 18	Tuition: \$1,500
Vancouver	302	Wtr	11 wk/60 hr	Mon/Wed	6p-9p	January 6 - March 23	Tuition: \$1,500
Vancouver	303	Spr	9 wk/51 hr	Mon/Wed	6p-9p	April 6 - June 3	Tuition: \$1,500
COMMERCIAL INSIDE WIREMAN LEVEL 4							
Bellevue	401	Fall	15 wk/87 hr	Mon/Wed	5p-8p	September 4 - December 18	Tuition: \$1,500
Bellevue	402	Wtr	11 wk/63 hr	Mon/Wed	5p-8p	January 6 - March 18	Tuition: \$1,500
Bellevue	403	Spr	9 wk/51 hr	Mon/Wed	5p-8p	April 6 - June 3	Tuition: \$1,500
Marysville 4A	401	Fall	15 wk/87 hr	Tue/Thu	5p-8p	September 3 - December 17	Tuition: \$1,500
Marysville 4A	402	Wtr	11 wk/63 hr	Tue/Thu	5p-8p	January 7 - March 17	Tuition: \$1,500
Marysville 4A	403	Spr	9 wk/51 hr	Tue/Thu	5p-8p	April 4 - June 2	Tuition: \$1,500
Marysville 4B	401	Fall	4 wk/81 hr	Fri/Sat	8a-5p	September 6 & 7; October 4 & 5; November 1 & 2; December 6 & 7 + <i>Assignments</i>	Tuition: \$1,500
Marysville 4B	402	Wtr	3 wk/60 hr	Fri/Sat	8a-5p	January 3 & 4; February 7 & 8; March 6 & 7 + <i>Assignments</i>	Tuition: \$1,500
Marysville 4B	403	Spr	3 wk/60 hr	Fri/Sat	8a-5p	April 3 & 4; May 1 & 2; June 5 & 6 + <i>Assignments</i>	Tuition: \$1,500
Tacoma 4A	401	Fall	15 wk/90 hr	Mon/Wed	6p-9p	September 4 - December 16 + 1 <i>Saturday</i>	Tuition: \$1,500
Tacoma 4A	402	Wtr	11 wk/60 hr	Mon/Wed	6p-9p	January 6 - March 9 + 1 <i>Saturday</i>	Tuition: \$1,500
Tacoma 4A	403	Spr	9 wk/51 hr	Mon/Wed	6p-9p	March 30 - May 18 + 1 <i>Saturday</i>	Tuition: \$1,500
Tacoma 4B	401	Fall	15 wk/90 hr	Tue/Thu	6p-9p	September 3 - December 17 + 1 <i>Saturday</i>	Tuition: \$1,500
Tacoma 4B	402	Wtr	11 wk/60 hr	Tue/Thu	6p-9p	January 7 - March 5 + 1 <i>Saturday</i>	Tuition: \$1,500
Tacoma 4B	403	Spr	9 wk/51 hr	Tue/Thu	6p-9p	April 1 - May 20 + 1 <i>Saturday</i>	Tuition: \$1,500
Vancouver	401	Fall	15 wk/90 hr	Mon/Wed	6p-9p	September 4 - December 18	Tuition: \$1,500
Vancouver	402	Wtr	11 wk/60 hr	Mon/Wed	6p-9p	January 6 - March 23	Tuition: \$1,500
Vancouver	403	Spr	9 wk/51 hr	Mon/Wed	6p-9p	April 6 - June 3	Tuition: \$1,500

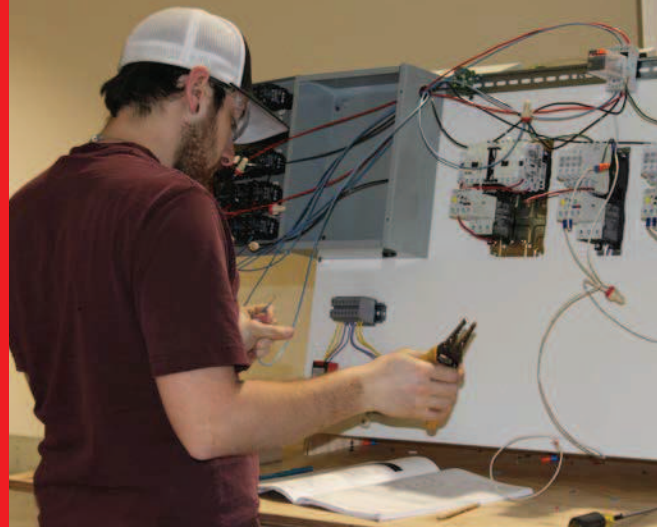


All first year classes include
OSHA 10 for Construction



ELECTRICAL: LOW ENERGY/ SOUND & COMMUNICATION TECHNICIAN

The low energy/sound and communication technician tasks include the installing, servicing and maintaining of systems for sound, audio, video, fire and burglar alarm systems, CCTV security, access control, fiber optics, telephone/data and computer systems integration. Their work generally focuses on the distribution of low-voltage signals among microprocessor-based devices and controls. The technician's duties generally include installing, connecting, calibrating, and servicing products that move voice, video, audio, and data signals, and products that control mechanical and electrical apparatuses. CITC provides a comprehensive, three year Low Energy/Sound & Communication curriculum that prepares workers for their "06" electrical journeyman exam.



NOTE: IT IS CRUCIAL THAT STUDENTS HAVE REQUIRED BOOKS PRIOR TO THE FIRST CLASS MEETING. A STUDENT WHO DOES NOT HAVE BOOKS BY THE END OF THE SECOND WEEK MAY BE SENT HOME AND BE CHARGED WITH AN ABSENCE.

LOW ENERGY/SOUND & COMMUNICATION TECHNICIAN LEVEL 1

Minimum: 201 hours per year

LOW ENERGY/SOUND & COMMUNICATION TECHNICIAN 101: FALL QUARTER

Students will receive an overview of the electrical trade and be introduced to electrical safety, trade math for electricians, electrical drawings, electrical pathways and spaces, and hand bending of conduit. Includes a First Aid/CPR course. *Schedule for lab dates will be handed out the first night of class each quarter.*

LOW ENERGY/SOUND & COMMUNICATION TECHNICIAN 102: WINTER QUARTER

Students will be introduced to the 2017 National Electric Code® and will learn low voltage cabling, DC circuits, AC circuits, and switching devices and timers.

LOW ENERGY/SOUND & COMMUNICATION TECHNICIAN 103: SPRING QUARTER

Students will learn about semiconductors and integrated circuits, codes and standards, wire and cable terminations, and electrical test equipment. Includes OSHA 10 training.

REQUIRED BOOKS - LOW ENERGY/SOUND & COMMUNICATION TECHNICIAN LEVEL 1

It is the student's responsibility to have the following book(s) on the first night of class:

CITC Electronic Systems Technician Level 1	Contact CITC for information
NFPA 72: National Fire Alarm and Signaling Code Handbook	978-1455920563
2017 National Electric Code (NEC) Book	978-1-4559-1277-3
Washington State Electrical RCW/WACs	Free download available through L&I

LOW ENERGY/SOUND & COMMUNICATION TECHNICIAN LEVEL 2

Minimum: 201 hours per year

LOW ENERGY/SOUND & COMMUNICATION TECHNICIAN 201: FALL QUARTER

Students will learn about power quality and grounding, buses and networks, fiber optics, and wireless communication. *Schedule for lab dates will be handed out the first night of class each quarter.*

LOW ENERGY/SOUND & COMMUNICATION TECHNICIAN 202: WINTER QUARTER

Students will learn about rack assemblies, maintenance and repair of low voltage systems, an introduction to audio and video systems, and an introduction to green building practices.

LOW ENERGY/SOUND & COMMUNICATION TECHNICIAN 203: SPRING QUARTER

Students will learn about broadband systems, telecommunications systems, and continue learning about audio and video systems.

REQUIRED BOOKS - LOW ENERGY/SOUND & COMMUNICATION TECHNICIAN LEVEL 2

It is the student's responsibility to have the following book(s) on the first night of class:

CITC Electronic Systems Technician Level 2	Contact CITC for information
NCCER Your Role in the Green Environment Trainee Guide, 3rd Ed.	978-0-13-294863-0
NFPA 72: National Fire Alarm and Signaling Code Handbook	978-1455920563
2017 National Electric Code (NEC) Book	978-1-4559-1277-3
Washington State Electrical RCW/WACs	Free download available through L&I

LOW ENERGY/SOUND & COMMUNICATION TECHNICIAN LEVEL 3

Minimum: 201 hours per year (Not Offered)

LOW ENERGY SOUND & COMMUNICATION TECHNICIAN 301: FALL QUARTER

This quarter covers the design, installation guidelines and troubleshooting of intrusion detection systems; also the design, installation and troubleshooting of residential and commercial fire alarms.

LOW ENERGY/SOUND & COMMUNICATION TECHNICIAN 302: WINTER QUARTER

Students will study the system requirements, installation requirements and code specifications of nurse call and signaling systems found in health care facilities; review the installation and configuration, testing and troubleshooting of closed circuit TV systems in various sized facilities; learn about the installation practices and electrical codes related to various access control systems.

LOW ENERGY/SOUND & COMMUNICATION TECHNICIAN 303: SPRING QUARTER

Students will learn about the design and installation best practices for building networks in smart houses and businesses; participate in a comprehensive review of all related NEC code and associated Oregon and Washington State rules in preparation for licensing exams.

APPRENTICESHIP MONTHLY WORK LOGS



Apprenticeship monthly work logs can be submitted to the apprenticeship department via email: worklogs@citcwa.org; fax: (425) 289-0085; mail to the CITC main office: 1930 116th Ave NE Bellevue, WA 98004; or in person to the CITC front office.

Allan Kush started in the trade in 1982. CITC faculty member since 2018.

Brandon Konold started in the trade in 2007. Graduated from CITC in 2011. CITC faculty member since 2015.

Steve King started in the trade in 1996. Technical College graduate 2001. CITC faculty member since 2017.

David Matt has over 40 years of experience as an electrician. CITC faculty member since 2019.

Dennis McConkey started in the trade in 1988. Associate of Science degree in electronics engineering technology in 1971 from Blue Mountain Community College. CITC faculty member since 2017.

Greg McNaught has over 30 years of experience as an electrician. CITC faculty member since 2014.

Joe Ogan started in the trade in 1998. Apprenticeship graduate in 2002. CITC faculty member since 2017.

Dave Otterson has over 45 years experience in the electrical industry. Dave became a licensed O1 Journeyman in 1975. CITC faculty member since 2014.

Tom Reynolds started in the trade in 1968. Apprenticeship graduate in 1971. CITC faculty member since 2002. Awarded 2017/2018 CITC Craft Training Instructor of the Year.

Jeff Shaw started in the trade in 2004. CITC faculty member since 2017.

Lara Siegfried started in the trade in 2010. CITC graduate in 2014. CITC faculty member since 2017. Awarded 2018/2019 CITC Western Washington Craft Training Instructor of the Year.

Erik Skuja started in the trade in 1991. CITC Faculty member since 2018.

Rick St. Vincent started in the trade in 2001. Graduated from FAEC Apprenticeship Program in 2005. CITC faculty member since 2006. Awarded 2011/2012 CITC Craft Training Instructor of the Year.


Terry Walker started in the trade in 1996. CITC faculty member since 2018.

Low Energy/Sound & Communication Technician Schedule & Tuition

Western Washington Region

LOW ENERGY/SOUND & COMMUNICATION TECHNICIAN LEVEL 1							
Marysville	101	Fall	4 wk/81 hr	Fri/Sat	8a-5p	September 13 & 14; October 11 & 12; November 8 & 9; December 13 & 14 + Assignments	Tuition: \$1,500
Marysville	102	Wtr	3 wk/60 hr	Fri/Sat	8a-5p	January 10 & 11; February 7 & 8; March 13 & 14 + Assignments	Tuition: \$1,500
Marysville	103	Spr	3 wk/60 hr	Fri/Sat	8a-5p	April 10 & 11; May 8 & 9; June 12 & 13 + Assignments	Tuition: \$1,500
LOW ENERGY/SOUND & COMMUNICATION TECHNICIAN LEVEL 2							
Marysville	201	Fall	4 wk/81 hr	Fri/Sat	8a-5p	September 20 & 21; October 18 & 19; November 15 & 16; December 20 & 21 + Assignments	Tuition: \$1,500
Marysville	202	Wtr	3 wk/60 hr	Fri/Sat	8a-5p	January 17 & 18; February 14 & 15; March 20 & 21 + Assignments	Tuition: \$1,500
Marysville	203	Spr	3 wk/60 hr	Fri/Sat	8a-5p	April 17 & 18; May 15 & 16; June 19 & 20 + Assignments	Tuition: \$1,500

NCCER BOOKSTORE

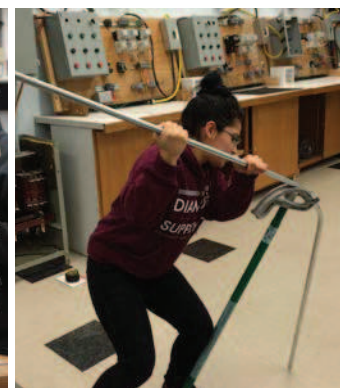
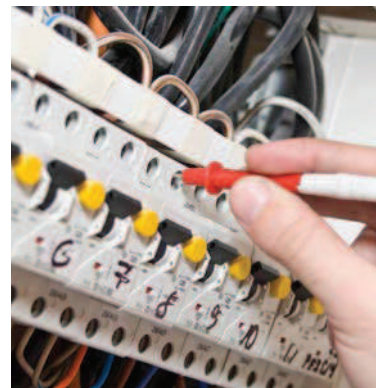


20% OFF

Enter code **CITC-WA** to receive 20% off your NCCER books

Includes free shipping on your first order

www.nccer.org/bookstore



ELECTRICAL: RESIDENTIAL WIREMAN

Residential wiremen perform many of the same tasks as commercial inside wiremen, but are limited to residential environments such as single-family dwellings, apartment complexes and condominiums. The residential wireman installs, maintains and repairs the electrical systems in homes and other types of residential installations. CITC provides a comprehensive, two-year residential wireman curriculum that prepares workers for their "02" electrical journeyman exam.



NOTE: IT IS CRUCIAL THAT STUDENTS HAVE REQUIRED BOOKS PRIOR TO THE FIRST CLASS MEETING. A STUDENT WHO DOES NOT HAVE BOOKS BY THE END OF THE SECOND WEEK MAY BE SENT HOME AND BE CHARGED WITH AN ABSENCE.

RESIDENTIAL WIREMAN LEVEL 1

Minimum: 201 hours per year

RESIDENTIAL WIREMAN 101: FALL QUARTER

Students will begin with an orientation for the electrical trade, jobsite safety, extensive electrical mathematics, an introduction to electrical circuits, basic electrical theory (Ohms Law, various circuits) and will begin using the National Electrical Code (NEC) and Washington State rules (RCW/WAC). *Schedule for lab dates will be handed out the first night of class each quarter.*

RESIDENTIAL WIREMAN 102: WINTER QUARTER

Students continue extensive use of the NEC and RCW/WAC's, learn how to install various device boxes, how to bend small diameter conduit, and types and uses of raceways and fittings.

RESIDENTIAL WIREMAN 103: SPRING QUARTER

Students learn about the NEC requirements for conductors and cables, begin using basic electrical drawings, review code and installation requirements for residential electrical service, and learn to use multiple pieces of electrical test equipment. Students will review RCW 19.28 and WAC 29-46B, jobsite safety practices and standards. Includes OSHA 10 Training.

REQUIRED BOOKS - RESIDENTIAL WIREMAN LEVEL 1

It is the student's responsibility to have the following book(s) on the first night of class:	
NCCER Core Curriculum Trainee Guide, 5th Edition (Paperback) or NCCER Core Curriculum Trainee Guide, 5th Edition (Hardcover)	978-013-413098-9 978-0-13-413143-6
NCCER Electrical Level 1 Trainee Guide, 9th Edition (Paperback) or NCCER Electrical Level 1 Trainee Guide, 9th Edition (Hardcover)	978-013-473820-8 978-0-13-480473-6
Delmar's Standard Textbook of Electricity, 6th Edition	978-1-285-85270-6
2017 National Electric Code (NEC)	978-1-4559-1277-3
Washington State Electrical RCW/WACs	Free download available through L&I

RESIDENTIAL WIREMAN LEVEL 2

Minimum: 201 hours per year

RESIDENTIAL WIREMAN 201: FALL QUARTER

Students will complete a review of math concepts and code from the previous year, then complete NCCER Modules (with related NEC articles and RCW/WAC rules) for: Alternating Current; Motors: Theory and Application; and Electric Lighting. *Schedule for lab dates will be handed out the first night of class each quarter.*

RESIDENTIAL WIREMAN 202: WINTER QUARTER

Students will complete NCCER Modules (with related NEC articles and RCW/WAC rules) for: Conduit Bending; Pull and Junction Boxes; Conductor Installations; and Cable Trays.

RESIDENTIAL WIREMAN 203: SPRING QUARTER

Students will complete NCCER Modules (with related NEC articles and RCW/WAC rules) for: Conductor Terminations and Splices; Grounding and Bonding; Circuit Breakers and Fuses; and Control Systems – Fundamental Concepts. Also included is a review of green building best practices and alternative energy sources.

REQUIRED BOOKS - RESIDENTIAL WIREMAN LEVEL 2

It is the student's responsibility to have the following book(s) on the first night of class:	
NCCER Electrical Level 2 Trainee Guide, 9th Edition (Paperback) or NCCER Electrical Level 2 Trainee Guide, 9th Edition (Hardcover)	978-013-473821-5 978-0-13-480472-9
NCCER Your Role in the Green Environment. Trainee Guide, 3rd Ed.	978-0-13-294863-0
Delmar's Standard Textbook of Electricity, 6th Edition	978-1-285-85270-6
Soares Book on Grounding and Bonding, 13th Edition (NEC 2017)	978-1890659738
2017 National Electric Code (NEC)	978-1-4559-1277-3
Washington State Electrical RCW/WACs	Free download available through L&I

NCCER BOOKSTORE

Enter code
CITC-WA
to receive 20% off
your NCCER books

*Includes free shipping
on your first order*

20%
OFF

www.nccer.org/bookstore

APPRENTICESHIP MONTHLY WORK LOGS

Apprenticeship monthly work logs can be submitted to the apprenticeship department via email: worklogs@citcwa.org; fax: (425) 289-0085; mail to the CITC main office: 1930 116th Ave NE Bellevue, WA 98004; or in person to the CITC front office.

Residential Wireman Schedule & Tuition

Eastern Washington Region

RESIDENTIAL WIREMAN LEVEL 1							
Pasco	101	Fall	4 wk/81 hr	Fri/Sat	8a-5p	September 20 & 21; October 18 & 19; November 15 & 16; December 20 & 21 + Assignments	Tuition: \$1,125
Pasco	102	Wtr	3 wk/60 hr	Fri/Sat	8a-5p	January 24 & 25; February 21 & 22; March 20 & 21 + Assignments	Tuition: \$1,125
Pasco	103	Spr	3 wk/60 hr	Fri/Sat	8a-5p	April 24 & 25; May 15 & 16; June 12 & 13 + Assignments	Tuition: \$1,125
Spokane 1A	101	Fall	4 wk/81 hr	Fri/Sat	8a-5p	September 20 & 21; October 18 & 19; November 15 & 16; December 20 & 21 + Assignments	Tuition: \$1,125
Spokane 1A	102	Wtr	3 wk/60 hr	Fri/Sat	8a-5p	January 24 & 25; February 21 & 22; March 20 & 21 + Assignments	Tuition: \$1,125
Spokane 1A	103	Spr	3 wk/60 hr	Fri/Sat	8a-5p	April 17 & 18; May 15 & 16; June 19 & 20 + Assignments	Tuition: \$1,125
Spokane 1B	101	Fall	4 wk/81 hr	Fri/Sat	8a-5p	September 13 & 14; October 11 & 12; November 8 & 9; December 13 & 14 + Assignments	Tuition: \$1,125
Spokane 1B	102	Wtr	3 wk/60 hr	Fri/Sat	8a-5p	January 17 & 18; February 14 & 15; March 13 & 14 + Assignments	Tuition: \$1,125
Spokane 1B	103	Spr	3 wk/60 hr	Fri/Sat	8a-5p	April 24 & 25; May 8 & 9; June 12 & 13 + Assignments	Tuition: \$1,125
RESIDENTIAL WIREMAN LEVEL 2							
Pasco	201	Fall	4 wk/81 hr	Fri/Sat	8a-5p	September 13 & 14; October 11 & 12; November 8 & 9; December 13 & 14 + Assignments	Tuition: \$1,125
Pasco	202	Wtr	3 wk/60 hr	Fri/Sat	8a-5p	January 17 & 18; February 14 & 15; March 13 & 14 + Assignments	Tuition: \$1,125
Pasco	203	Spr	3 wk/60 hr	Fri/Sat	8a-5p	April 17 & 18; May 8 & 9; June 12 & 13 + Assignments	Tuition: \$1,125
Spokane 2A	201	Fall	4 wk/81 hr	Fri/Sat	8a-5p	September 6 & 7; October 4 & 5; November 1 & 2; December 6 & 7 + Assignments	Tuition: \$1,125
Spokane 2A	202	Wtr	3 wk/60 hr	Fri/Sat	8a-5p	January 10 & 11; February 7 & 8; March 6 & 7 + Assignments	Tuition: \$1,125
Spokane 2A	203	Spr	3 wk/60 hr	Fri/Sat	8a-5p	April 3 & 4; May 1 & 2; June 5 & 6 + Assignments	Tuition: \$1,125
Spokane 2B	201	Fall	4 wk/81 hr	Fri/Sat	8a-5p	September 20 & 21; October 18 & 19; November 15 & 16; December 20 & 21 + Assignments	Tuition: \$1,125
Spokane 2B	202	Wtr	3 wk/60 hr	Fri/Sat	8a-5p	January 24 & 25; February 21 & 22; March 20 & 21 + Assignments	Tuition: \$1,125
Spokane 2B	203	Spr	3 wk/60 hr	Fri/Sat	8a-5p	April 17 & 18; May 15 & 16; June 19 & 20 + Assignments	Tuition: \$1,125

KEEP YOUR LICENSE ACTIVE WITH WASHINGTON STATE-APPROVED

CONTINUING EDUCATION

- Exam Prep for Electricians
- NEC Code Update
- Exam Prep for Plumbers
- Plumbing Code Update
- Basic Classroom Training
- Plumbing IR Electrical
- First Aid/CPR
- RCW/WAC Update
- Medical Gas Piping
- NFPA Safety

ONLINE & CLASSROOM



Register online at ceu.citcwa.org
or toll-free at (877) 238-8646

Residential Wireman Schedule & Tuition

Western Washington Region

RESIDENTIAL WIREMAN LEVEL 1							
Bellevue 1A	101	Fall	15 wk/87 hr	Mon/Wed	5p-8p	September 4 - December 18	Tuition: \$1,500
Bellevue 1A	102	Wtr	11 wk/63 hr	Mon/Wed	5p-8p	January 6 - March 18	Tuition: \$1,500
Bellevue 1A	103	Spr	9 wk/51 hr	Mon/Wed	5p-8p	April 6 - June 3	Tuition: \$1,500
Bellevue 1B	101	Fall	15 wk/87 hr	Tue/Thu	5p-8p	September 3 - December 17	Tuition: \$1,500
Bellevue 1B	102	Wtr	11 wk/63 hr	Tue/Thu	5p-8p	January 7 - March 17	Tuition: \$1,500
Bellevue 1B	103	Spr	9 wk/51 hr	Tue/Thu	5p-8p	April 4 - June 2	Tuition: \$1,500
Marysville 1A	101	Fall	15 wk/87 hr	Mon/Wed	5p-8p	September 4 - December 18	Tuition: \$1,500
Marysville 1A	102	Wtr	11 wk/63 hr	Mon/Wed	5p-8p	January 6 - March 18	Tuition: \$1,500
Marysville 1A	103	Spr	9 wk/51 hr	Mon/Wed	5p-8p	April 6 - June 3	Tuition: \$1,500
Marysville 1B	101	Fall	4 wk/81 hr	Fri/Sat	8a-5p	September 6 & 7; October 4 & 5; November 1 & 2; December 6 & 7 + Assignments	Tuition: \$1,500
Marysville 1B	102	Wtr	3 wk/60 hr	Fri/Sat	8a-5p	January 3 & 4; February 7 & 8; March 6 & 7 + Assignments	Tuition: \$1,500
Marysville 1B	103	Spr	3 wk/60 hr	Fri/Sat	8a-5p	April 3 & 4; May 1 & 2; June 5 & 6 + Assignments	Tuition: \$1,500
Tacoma 1A	101	Fall	15 wk/90 hr	Mon/Wed	6p-9p	September 4 - December 16 + 1 Saturday	Tuition: \$1,500
Tacoma 1A	102	Wtr	11 wk/60 hr	Mon/Wed	6p-9p	January 6 - March 9 + 1 Saturday	Tuition: \$1,500
Tacoma 1A	103	Spr	9 wk/51 hr	Mon/Wed	6p-9p	March 30 - May 18 + 1 Saturday	Tuition: \$1,500
Tacoma 1B	101	Fall	15 wk/90 hr	Tue/Thu	6p-9p	September 3 - December 17 + 1 Saturday	Tuition: \$1,500
Tacoma 1B	102	Wtr	11 wk/60 hr	Tue/Thu	6p-9p	January 7 - March 5 + 1 Saturday	Tuition: \$1,500
Tacoma 1B	103	Spr	9 wk/51 hr	Tue/Thu	6p-9p	April 1 - May 20 + 1 Saturday	Tuition: \$1,500
Vancouver 1A	101	Fall	15 wk/87 hr	Mon/Wed	6p-9p	September 4 - December 18	Tuition: \$1,500
Vancouver 1A	102	Wtr	11 wk/63 hr	Mon/Wed	6p-9p	January 6 - March 23	Tuition: \$1,500
Vancouver 1A	103	Spr	9 wk/51 hr	Mon/Wed	6p-9p	April 6 - June 3	Tuition: \$1,500
Vancouver 1B	101	Fall	4 wk/81 hr	Fri/Sat	8a-5p	September 20 & 21; October 18 & 19; November 1 & 2; November 22 & 23; December 20 & 21 + Assignments	Tuition: \$1,500
Vancouver 1B	102	Wtr	3 wk/60 hr	Fri/Sat	8a-5p	January 17 & 18; February 7 & 8; February 28 & 29; March 20 & 21 + Assignments	Tuition: \$1,500
Vancouver 1B	103	Spr	3 wk/60 hr	Fri/Sat	8a-5p	April 17 & 18; May 8 & 9; May 22 & 23; June 5 & 6 + Assignments	Tuition: \$1,500
RESIDENTIAL WIREMAN LEVEL 2							
Bellevue 2A	201	Fall	15 wk/87 hr	Mon/Wed	5p-8p	September 4 - December 18	Tuition: \$1,500
Bellevue 2A	202	Wtr	11 wk/63 hr	Mon/Wed	5p-8p	January 6 - March 18	Tuition: \$1,500
Bellevue 2A	203	Spr	9 wk/51 hr	Mon/Wed	5p-8p	April 6 - June 3	Tuition: \$1,500
Bellevue 2B	201	Fall	15 wk/87 hr	Tue/Thu	5p-8p	September 3 - December 19	Tuition: \$1,500
Bellevue 2B	202	Wtr	11 wk/63 hr	Tue/Thu	5p-8p	January 7 - March 17	Tuition: \$1,500
Bellevue 2B	203	Spr	9 wk/51 hr	Tue/Thu	5p-8p	April 4 - June 2	Tuition: \$1,500
Marysville 2A	201	Fall	15 wk/87 hr	Mon/Wed	5p-8p	September 4 - December 18	Tuition: \$1,500
Marysville 2A	202	Wtr	11 wk/63 hr	Mon/Wed	5p-8p	January 6 - March 18	Tuition: \$1,500
Marysville 2A	203	Spr	9 wk/51 hr	Mon/Wed	5p-8p	April 6 - June 3	Tuition: \$1,500
Marysville 2B	201	Fall	4 wk/81 hr	Fri/Sat	8a-5p	September 13 & 14; October 11 & 12; November 8 & 9; December 13 & 14 + Assignments	Tuition: \$1,500
Marysville 2B	202	Wtr	3 wk/60 hr	Fri/Sat	8a-5p	January 10 & 11; February 7 & 8; March 13 & 14 + Assignments	Tuition: \$1,500
Marysville 2B	203	Spr	3 wk/60 hr	Fri/Sat	8a-5p	April 10 & 11; May 8 & 9; June 12 & 13 + Assignments	Tuition: \$1,500
Tacoma 2A	201	Fall	15 wk/90 hr	Mon/Wed	6p-9p	September 4 - December 16 + 1 Saturday	Tuition: \$1,500
Tacoma 2A	202	Wtr	11 wk/60 hr	Mon/Wed	6p-9p	January 6 - March 9 + 1 Saturday	Tuition: \$1,500
Tacoma 2A	203	Spr	9 wk/51 hr	Mon/Wed	6p-9p	March 30 - May 18 + 1 Saturday	Tuition: \$1,500
Tacoma 2B	201	Fall	15 wk/90 hr	Tue/Thu	6p-9p	September 3 - December 17 + 1 Saturday	Tuition: \$1,500
Tacoma 2B	202	Wtr	11 wk/60 hr	Tue/Thu	6p-9p	January 7 - March 5 + 1 Saturday	Tuition: \$1,500
Tacoma 2B	203	Spr	9 wk/51 hr	Tue/Thu	6p-9p	April 1 - May 20 + 1 Saturday	Tuition: \$1,500
Vancouver	201	Fall	15 wk/87 hr	Mon/Wed	6p-9p	September 4 - December 18	Tuition: \$1,500
Vancouver	202	Wtr	11 wk/63 hr	Mon/Wed	6p-9p	January 6 - March 23	Tuition: \$1,500
Vancouver	203	Spr	9 wk/51 hr	Mon/Wed	6p-9p	April 6 - June 3	Tuition: \$1,500