

# ELECTRICAL: COMMERCIAL INSIDE WIREMAN

Electricians install, maintain and repair electrical systems in and around structures. They install wiring and other electrical components such as motors, transformers, circuit breaker panels, switches and lighting by following blueprints, the National Electrical Code® and state and local codes. CITC provides a comprehensive, four-year, commercial inside wireman electrical curriculum that prepares workers for their “01” journeyman exam which allows them to perform all types of electrical work.

## HYBRID LEARNING PROGRAM

CITC has taken company-wide measures to help prevent the spread of the COVID-19 virus to ensure the health and safety of students, faculty, staff and the community. Due to the COVID-19 Pandemic, CITC classes will be delivered in a hybrid format with theory classes being offered virtually and small in-person labs scheduled at our facilities throughout the year. All in-person lab sessions will be scheduled to ensure students and faculty can maintain social distancing protocols during lab activities and performance testing.

Students will be required to have access to a computer or tablet device with a working camera and microphone. Additionally, all students will need to have access to a reliable internet source when classes begin in the fall. For additional information on the technical requirements for this program please contact the CITC office at (425) 454-2482.

**Note: It is crucial that students have required books prior to the first class meeting. A student who does not have books by the end of the second week may be dismissed from class and charged with an absence.**



## APPRENTICESHIP MONTHLY WORK LOGS

Apprenticeship monthly work logs can be submitted to the apprenticeship department via email: **worklogs@citcwa.org**; fax: **(425) 289-0085**; mail to the CITC main office: **1930 116th Ave NE Bellevue, WA 98004**; or placed in the Drop Box outside of CITC Facilities.

## NCCERCONNECT 2.0 WITH PEARSON eTEXT ACCESS CARD

NCCERConnect 2.0 is an online training program that enhances student learning with a range of visual, auditory, and interactive elements. Your Pearson eText Access Card will give you access to an eBook version of the textbook included in the package.



**20% OFF**

Enter code **NCCER20** to receive 20% off your NCCER books

*Includes free shipping on your first order*

[www.nccer.org/bookstore](http://www.nccer.org/bookstore)

**COMMERCIAL INSIDE WIREMAN LEVEL 1**

Minimum: 201 hours per year

**COMMERCIAL INSIDE WIREMAN 101: FALL QUARTER**

Students will begin with an orientation for the electrical trade, jobsite safety, extensive electrical mathematics, an introduction to electrical circuits, basic electrical theory (Ohms Law, various circuits) and will begin using the National Electrical Code (NEC) and Washington State rules (RCW/WAC). Schedule for lab dates will be handed out the first night of class each quarter.

**COMMERCIAL INSIDE WIREMAN 102: WINTER QUARTER**

Students continue extensive use of the NEC and RCW/WAC's, learn how to install various device boxes, how to bend small diameter conduit, and types and uses of raceways and fittings.

**COMMERCIAL INSIDE WIREMAN 103: SPRING QUARTER**

Students learn about the NEC requirements for conductors and cables, begin using basic electrical drawings, review code and installation requirements for residential electrical service, and learn to use multiple pieces of electrical test equipment. Students will review RCW 19.28 and WAC 29-46B, jobsite safety practices and standards. Includes OSHA 10 Training.

REQUIRED BOOKS - COMMERCIAL INSIDE WIREMAN LEVEL 1	
It is the student's responsibility to have the following book(s) on the first night of class:	
NCCER Core Curriculum Package - includes the following: <ul style="list-style-type: none"> <li>• Core Curriculum Trainee Guide, 5th Edition</li> <li>• Core Curriculum Trainee Guide, 5th Edition NCCERConnect 2.0 with Pearson eText Access Card</li> </ul>	ISBN: 9780134391922
NCCER Electrical Level 1 Package: <ul style="list-style-type: none"> <li>• Electrical Level 1 Trainee Guide, 9th Edition</li> <li>• Electrical Level 1 Trainee Guide, 9th Edition, NCCERConnect 2.0 with Pearson eText Access Card</li> </ul>	ISBN: 9780134820699
Delmar's Standard Textbook of Electricity, 6th Edition, Hardcover <i>or</i> Delmar's Standard Textbook of Electricity, 6th Edition, Kindle Edition	ISBN: 9781285852706
2020 National Electric Code (NEC)	ISBN: 9781455922970
Washington State Electrical RCW/WACs	Free download available through L&I



All first year classes include  
**OSHA 10 for Construction**



**COMMERCIAL INSIDE WIREMAN LEVEL 2**

Minimum: 201 hours per year

**COMMERCIAL INSIDE WIREMAN 201: FALL QUARTER**

Students will complete a review of math concepts and code from the previous year, then complete NCCER Modules (with related NEC articles and RCW/WAC rules) for: Alternating Current; Motors: Theory and Application; and Electric Lighting. Schedule for lab dates will be handed out the first night of class each quarter.

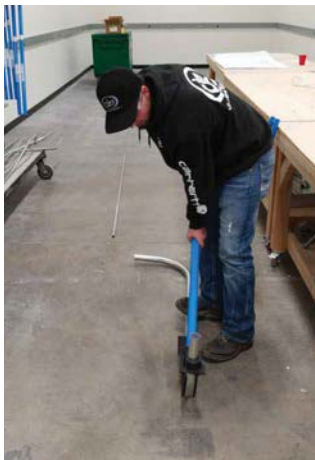
**COMMERCIAL INSIDE WIREMAN 202: WINTER QUARTER**

Students will complete NCCER Modules (with related NEC articles and RCW/WAC rules) for: Conduit Bending; Pull and Junction Boxes; Conductor Installations; and Cable Trays.

**COMMERCIAL INSIDE WIREMAN 203: SPRING QUARTER**

Students will complete NCCER Modules (with related NEC articles and RCW/WAC rules) for: Conductor Terminations and Splices; Grounding and Bonding; Circuit Breakers and Fuses; and Control Systems – Fundamental Concepts. Also included is a review of green building best practices and alternative energy sources.

REQUIRED BOOKS - COMMERCIAL INSIDE WIREMAN LEVEL 2	
It is the student's responsibility to have the following book(s) on the first night of class:	
NCCER Electrical Level 2 Package: • Electrical Level 2 Trainee Guide, 9th Edition • Electrical Level 2 Trainee Guide, 9th Edition, NCCERConnect 2.0 with Pearson eText Access Card	ISBN: 9780134820675
Your Role in the Green Environment, 4th Edition, Paperback <i>or</i> Your Role in the Green Environment, 4th Edition, Adobe Reader	ISBN: 9780136701200 ISBN: 9780136639282
Delmar's Standard Textbook of Electricity, 6th Edition, Hardcover <i>or</i> Delmar's Standard Textbook of Electricity, 6th Edition, Kindle Edition	ISBN: 9781285852706
Soares Book on Grounding and Bonding, 13th Edition, Paperback <i>or</i> Soares Book on Grounding and Bonding, 13th Edition, Kindle Edition	ISBN: 9781890659738
2017 National Electric Code (NEC)	ISBN: 9781455912773
Washington State Electrical RCW/WACs	Free download available through L&I



**COMMERCIAL INSIDE WIREMAN LEVEL 3**

Minimum: 201 hours per year

**COMMERCIAL INSIDE WIREMAN 301: FALL QUARTER**

Students will complete NCCER Modules (with related NEC articles and RCW/WAC rules) for: Load Calculations - Branch and Feeders; Conductor Selection, Sizing and Voltage Drop Calculations; Overcurrent Protection; Distribution Equipment and Transformers; Commercial Electrical Services (including commercial load calculations); Practical Applications of Lighting; Hazardous Locations; and Electrical Transformers. Schedule for lab dates will be handed out the first night of class each quarter.

**COMMERCIAL INSIDE WIREMAN 302: WINTER QUARTER**

Students will complete NCCER modules (with related NEC articles and RCW/WAC rules) for: Distribution Equipment (continuation from previous quarter); Commercial Electrical Services (continuation from previous quarter); Basic Electronic Theory and Electrical Transformers; Transformers – Single Phase, Three Phase, and Specialty Transformers; and Healthcare Facilities.

**COMMERCIAL INSIDE WIREMAN 303: SPRING QUARTER**

Students will complete NCCER modules (with related NEC articles and RCW/WAC rules) for: Healthcare Facilities (continuation from previous quarter); Communication Cabling; Practical Applications of Lighting; Voice, Data and Video; Heat Tracing and Freeze Protection; and Medium Voltage Terminations.

REQUIRED BOOKS - COMMERCIAL INSIDE WIREMAN LEVEL 3	
It is the student's responsibility to have the following book(s) on the first night of class:	
NCCER Electrical Level 3 Package: <ul style="list-style-type: none"> <li>• Electrical Level 3 Trainee Guide, 9th Edition</li> <li>• Electrical Level 3 Trainee Guide, 9th Edition, NCCERConnect 2.0 with Pearson eText Access Card</li> </ul>	ISBN: 9780134820705
NCCER Electrical Level 4 Package: <ul style="list-style-type: none"> <li>• Electrical Level 4 Trainee Guide, 9th Edition</li> <li>• Electrical Level 4 Trainee Guide, 9th Edition, NCCERConnect 2.0 with Pearson eText Access Card</li> </ul>	ISBN: 9780134820712
Delmar's Standard Textbook of Electricity, 6th Edition, Hardcover <b>or</b> Delmar's Standard Textbook of Electricity, 6th Edition, Kindle Edition	ISBN: 9781285852706
2017 National Electric Code (NEC)	ISBN: 9781455912773
Washington State Electrical RCW/WACs	Free download available through L&I

**COMMERCIAL INSIDE WIREMAN LEVEL 4**

Minimum: 201 hours per year

**COMMERCIAL INSIDE WIREMAN 401: FALL QUARTER**

Students will embark on a detailed study of NEC Article 430 - Motors, Motor Circuits and Controllers; motor theory and associated calculations; and other articles throughout the code pertaining to the installation of motors, controls and their circuits and feeders. Students will also be using NCCER modules (with related NEC articles and RCW/WAC rules) concerning: Motor Controls; Motor Calculations; Health Care Facilities; Practical Applications of Lighting; Commercial Electrical Services; Fire Alarm Systems; Heat Tracing and Freeze Protection; and HVAC Controls. Students will begin building live motor control projects. Schedule for lab dates will be handed out the first night of class each quarter.

**COMMERCIAL INSIDE WIREMAN 402: WINTER QUARTER**

Students will continue building live motor control projects using motor control drawings in order to understand applications to different industries. Students will complete approximately 25 Lab projects and a group motor control project.

**COMMERCIAL INSIDE WIREMAN 403: SPRING QUARTER**

Students will undertake a detailed study of NEC Articles 500, 501, 502, 503 and the introduction to the definitions of classified areas and hazardous locations. An extensive, comprehensive review prepares students for their journeyman exam.

REQUIRED BOOKS - COMMERCIAL INSIDE WIREMAN LEVEL 3	
It is the student's responsibility to have the following book(s) on the first night of class:	
NCCER Electrical Level 3 Package: <ul style="list-style-type: none"> <li>• Electrical Level 3 Trainee Guide, 9th Edition</li> <li>• Electrical Level 3 Trainee Guide, 9th Edition, NCCERConnect 2.0 with Pearson eText Access Card</li> </ul>	ISBN: 9780134820705
NCCER Electrical Level 4 Package: <ul style="list-style-type: none"> <li>• Electrical Level 4 Trainee Guide, 9th Edition</li> <li>• Electrical Level 4 Trainee Guide, 9th Edition, NCCERConnect 2.0 with Pearson eText Access Card</li> </ul>	ISBN: 9780134820712
Delmar's Standard Textbook of Electricity, 6th Edition, Hardcover <b>or</b> Delmar's Standard Textbook of Electricity, 6th Edition, Kindle Edition	ISBN: 9781285852706
2017 National Electric Code (NEC)	ISBN: 9781455912773
Washington State Electrical RCW/WACs	Free download available through L&I





## Electrical: Commercial Inside Wireman Instructors

As a part of our dedication and commitment to training, we take pride in delivering top quality instructors. CITC's instructors are highly skilled journey-level workers who bring their knowledge and years of trade experience into the classroom. All CITC instructors have been certified certification by the National Center for Construction Education and Research.

**Sinjin Anterola** started in the trade in 1996 and joined the CITC faculty in 2016.

**Jeffrey Ault** started in the trade in 1996 and joined the CITC faculty in 2016.

**Fred Bedell** started in the trade in 1984 and became a CITC faculty member in 2015.

**Justin Boley** is a graduate of CITC. Justin started in the trades in 2005. In 2010 became a CITC Apprentice and was the Commercial Electrical student of the year in 2013. Justin became a CITC faculty member in 2019.

**Eric Boston** is a graduate of CITC. Eric started in the trades in 2006. Justin became a CITC faculty member in 2019.

**Tom Bryant** started in the trade in 1993 and joined the CITC faculty in 2016.

**Richard Craig** started in the trade in 1982. Technical College graduate in 1984. Joined the CITC faculty in 2017. Received CITC Instructor of the Year award in 2019.

**Chester Garrett** started in the trade in 1966. Eleven years of teaching experience. Joined the CITC faculty in 2015.

**Robert Grigoryan** started in the trade 1997. Mechanical engineering graduate, 1985. Nuclear Plant Engineering graduate, 1990. Became a CITC faculty member in 2013.

**Joseph Harrison** started in the trade in 1999 and joined the CITC faculty in 2018.

**Jerry Katona** started in the trade in 1965. Graduate from North Seattle Community College in 1976 with degree in electrical theory. Admin license in 1981 and master electrician license in 2003. Joined the CITC faculty in 2017.

**Steve King** started in the trade in 1996. Technical College graduate 2001. Joined the CITC faculty in 2017.

**Brandon Konold** started in the trade in 2007. Graduated from CITC in 2011. Joined CITC the faculty 2015.

**Allan Kush** started in the trade in 1982 and joined the CITC faculty in 2018.

**Mike Lewis** started ion the trade in 2000. Apprenticeship graduate in 2005. Joined the CITC faculty in 2015.

**Tom Reynolds** stared in the trade in 1968. Apprenticeship graduate in 1971. Became a CITC faculty member in 2002. Received CITC Instructor of the Year award in 2019.

**Jeff Shaw** started in the trade in 2004 and joined the CITC faculty in 2017.

**Terry Walker** started in the trade in 1996 and joined the CITC faculty in 2018.

## Commercial Inside Wireman Schedule & Tuition

### Eastern Washington Region

COMMERCIAL INSIDE WIREMAN LEVEL 1								
Pasco	101	Fall	16 weeks	87 hours	Mon/Wed	5p-8p	September 2 - December 16 + 1 Saturday	Tuition: \$1,160
Pasco	102	Wtr	10 weeks	63 hours	Mon/Wed	5p-8p	January 4 - March 10 + 1 Saturday	Tuition: \$1,160
Pasco	103	Spr	7 weeks	51 hours	Mon/Wed	5p-8p	April 12 - May 24 + 2 Saturdays	Tuition: \$1,160
Spokane	101	Fall	16 weeks	87 hours	Mon/Wed	5p-8p	September 2 - December 16 + 1 Saturday	Tuition: \$1,160
Spokane	102	Wtr	10 weeks	63 hours	Mon/Wed	5p-8p	January 4 - March 10 + 1 Saturday	Tuition: \$1,160
Spokane	103	Spr	7 weeks	51 hours	Mon/Wed	5p-8p	April 12 - May 24 + 2 Saturdays	Tuition: \$1,160
COMMERCIAL INSIDE WIREMAN LEVEL 2								
Pasco	201	Fall	15 weeks	87 hours	Mon/Wed	5p-8p	September 2 - December 9 + 2 Saturdays	Tuition: \$1,160
Pasco	202	Wtr	9 weeks	63 hours	Mon/Wed	5p-8p	January 4 - March 3 + 2 Saturdays	Tuition: \$1,160
Pasco	203	Spr	7 weeks	51 hours	Mon/Wed	5p-8p	April 12 - May 24 + 2 Saturdays	Tuition: \$1,160
Spokane	201	Fall	15 weeks	87 hours	Mon/Wed	5p-8p	September 2 - December 9 + 2 Saturdays	Tuition: \$1,160
Spokane	202	Wtr	9 weeks	63 hours	Mon/Wed	5p-8p	January 4 - March 3 + 2 Saturdays	Tuition: \$1,160
Spokane	203	Spr	7 weeks	51 hours	Mon/Wed	5p-8p	April 12 - May 24 + 2 Saturdays	Tuition: \$1,160
COMMERCIAL INSIDE WIREMAN LEVEL 3								
Pasco	301	Fall	15 weeks	87 hours	Tue/Thu	5p-8p	September 3 - December 10 + 1 Saturday	Tuition: \$1,160
Pasco	302	Wtr	10 weeks	63 hours	Tue/Thu	5p-8p	January 5 - March 9 + 1 Saturday	Tuition: \$1,160
Pasco	303	Spr	8 weeks	51 hours	Tue/Thu	5p-8p	April 6 - May 25 + 1 Saturday	Tuition: \$1,160
Spokane	301	Fall	15 weeks	87 hours	Tue/Thu	5p-8p	September 3 - December 10 + 1 Saturday	Tuition: \$1,160
Spokane	302	Wtr	10 weeks	63 hours	Tue/Thu	5p-8p	January 5 - March 9 + 1 Saturday	Tuition: \$1,160
Spokane	303	Spr	8 weeks	51 hours	Tue/Thu	5p-8p	April 6 - May 25 + 1 Saturday	Tuition: \$1,160
COMMERCIAL INSIDE WIREMAN LEVEL 4								
Pasco	401	Fall	15 weeks	87 hours	Tue/Thu	5p-8p	September 3 - December 10 + 1 Saturday	Tuition: \$1,160
Pasco	402	Wtr	10 weeks	63 hours	Tue/Thu	5p-8p	January 5 - March 2 + 2 Saturdays	Tuition: \$1,160
Pasco	403	Spr	8 weeks	51 hours	Tue/Thu	5p-8p	April 5 - May 24 + 1 Saturday	Tuition: \$1,160
Spokane	401	Fall	15 weeks	87 hours	Tue/Thu	5p-8p	September 3 - December 10 + 1 Saturday	Tuition: \$1,160
Spokane	402	Wtr	10 weeks	63 hours	Tue/Thu	5p-8p	January 5 - March 2 + 2 Saturdays	Tuition: \$1,160
Spokane	403	Spr	8 weeks	51 hours	Tue/Thu	5p-8p	April 5 - May 24 + 1 Saturday	Tuition: \$1,160



All first year classes include  
**OSHA 10 for Construction**



## Commercial Inside Wireman Schedule & Tuition *continued*

### Western Washington Region

COMMERCIAL INSIDE WIREMAN LEVEL 1								
Bellevue 1A	101	Fall	16 weeks	87 hours	Mon/Wed	5p-8p	September 2 - December 16 + 1 Saturday	Tuition: \$1,545
Bellevue 1A	102	Wtr	10 weeks	63 hours	Mon/Wed	5p-8p	January 4 - March 10 + 1 Saturday	Tuition: \$1,545
Bellevue 1A	103	Spr	7 weeks	51 hours	Mon/Wed	5p-8p	April 12 - May 24 + 2 Saturdays	Tuition: \$1,545
Bellevue 1B	101	Fall	15 weeks	87 hours	Tue/Thu	5p-8p	September 3 - December 10 + 1 Saturday	Tuition: \$1,545
Bellevue 1B	102	Wtr	10 weeks	63 hours	Tue/Thu	5p-8p	January 5 - March 9 + 1 Saturday	Tuition: \$1,545
Bellevue 1B	103	Spr	7 weeks	51 hours	Tue/Thu	5p-8p	April 13 - May 24 + 2 Saturdays	Tuition: \$1,545
Marysville	101	Fall	16 weeks	87 hours	Mon/Wed	5p-8p	September 2 - December 16 + 1 Saturday	Tuition: \$1,545
Marysville	102	Wtr	10 weeks	63 hours	Mon/Wed	5p-8p	January 4 - March 10 + 1 Saturday	Tuition: \$1,545
Marysville	103	Spr	7 weeks	51 hours	Mon/Wed	5p-8p	April 12 - May 24 + 2 Saturdays	Tuition: \$1,545
Tacoma 1A	101	Fall	16 weeks	87 hours	Mon/Wed	5p-8p	September 2 - December 16 + 1 Saturday	Tuition: \$1,545
Tacoma 1A	102	Wtr	10 weeks	63 hours	Mon/Wed	5p-8p	January 4 - March 10 + 1 Saturday	Tuition: \$1,545
Tacoma 1A	103	Spr	7 weeks	51 hours	Mon/Wed	5p-8p	April 12 - May 24 + 2 Saturdays	Tuition: \$1,545
Tacoma 1B	101	Fall	15 weeks	87 hours	Tue/Thu	5p-8p	September 3 - December 10 + 1 Saturday	Tuition: \$1,545
Tacoma 1B	102	Wtr	10 weeks	63 hours	Tue/Thu	5p-8p	January 5 - March 9 + 1 Saturday	Tuition: \$1,545
Tacoma 1B	103	Spr	7 weeks	51 hours	Tue/Thu	5p-8p	April 13 - May 25 + 2 Saturdays	Tuition: \$1,545
Vancouver	101	Fall	16 weeks	87 hours	Mon/Wed	5p-8p	September 2 - December 16 + 1 Saturday	Tuition: \$1,545
Vancouver	102	Wtr	10 weeks	63 hours	Mon/Wed	5p-8p	January 4 - March 10 + 1 Saturday	Tuition: \$1,545
Vancouver	103	Spr	7 weeks	51 hours	Mon/Wed	5p-8p	April 12 - May 24 + 2 Saturdays	Tuition: \$1,545
COMMERCIAL INSIDE WIREMAN LEVEL 2								
Bellevue 2A	201	Fall	15 weeks	87 hours	Mon/Wed	5p-8p	September 2 - December 9 + 2 Saturdays	Tuition: \$1,545
Bellevue 2A	202	Wtr	9 weeks	63 hours	Mon/Wed	5p-8p	January 4 - March 3 + 2 Saturdays	Tuition: \$1,545
Bellevue 2A	203	Spr	7 weeks	51 hours	Mon/Wed	5p-8p	April 12 - May 24 + 2 Saturdays	Tuition: \$1,545
Bellevue 2B	201	Fall	14 weeks	87 hours	Tue/Thu	5p-8p	September 3 - December 3 + 2 Saturdays	Tuition: \$1,545
Bellevue 2B	202	Wtr	9 weeks	63 hours	Tue/Thu	5p-8p	January 5 - March 2 + 2 Saturdays	Tuition: \$1,545
Bellevue 2B	203	Spr	7 weeks	51 hours	Tue/Thu	5p-8p	April 13 - May 24 + 2 Saturdays	Tuition: \$1,545
Marysville	201	Fall	16 weeks	87 hours	Mon/Wed	5p-8p	September 2 - December 16 + 1 Saturday	Tuition: \$1,545
Marysville	202	Wtr	9 weeks	63 hours	Mon/Wed	5p-8p	January 4 - March 3 + 2 Saturdays	Tuition: \$1,545
Marysville	203	Spr	7 weeks	51 hours	Mon/Wed	5p-8p	April 12 - May 24 + 2 Saturdays	Tuition: \$1,545
Tacoma 2A	201	Fall	16 weeks	87 hours	Mon/Wed	5p-8p	September 2 - December 16 + 1 Saturday	Tuition: \$1,545
Tacoma 2A	202	Wtr	9 weeks	63 hours	Mon/Wed	5p-8p	January 4 - March 3 + 2 Saturdays	Tuition: \$1,545
Tacoma 2A	203	Spr	7 weeks	51 hours	Mon/Wed	5p-8p	April 12 - May 24 + 2 Saturdays	Tuition: \$1,545
Tacoma 2B	201	Fall	14 weeks	87 hours	Tue/Thu	5p-8p	September 3 - December 3 + 2 Saturdays	Tuition: \$1,545
Tacoma 2B	202	Wtr	9 weeks	63 hours	Tue/Thu	5p-8p	January 5 - March 2 + 2 Saturdays	Tuition: \$1,545
Tacoma 2B	203	Spr	7 weeks	51 hours	Tue/Thu	5p-8p	April 13 - May 25 + 2 Saturdays	Tuition: \$1,545
Vancouver	201	Fall	15 weeks	87 hours	Mon/Wed	5p-8p	September 2 - December 9 + 2 Saturdays	Tuition: \$1,545
Vancouver	202	Wtr	9 weeks	63 hours	Mon/Wed	5p-8p	January 4 - March 3 + 2 Saturdays	Tuition: \$1,545
Vancouver	203	Spr	7 weeks	51 hours	Mon/Wed	5p-8p	April 12 - May 24 + 2 Saturdays	Tuition: \$1,545



## Commercial Inside Wireman Schedule & Tuition *continued*

### Western Washington Region *continued*

COMMERCIAL INSIDE WIREMAN LEVEL 3								
Bellevue	301	Fall	15 weeks	87 hours	Tue/Thu	5p-8p	September 3 - December 10 + 1 Saturday	Tuition: \$1,545
Bellevue	302	Wtr	10 weeks	63 hours	Tue/Thu	5p-8p	January 5 - March 9 + 1 Saturday	Tuition: \$1,545
Bellevue	303	Spr	8 weeks	51 hours	Tue/Thu	5p-8p	April 6 - May 25 + 1 Saturday	Tuition: \$1,545
Marysville	301	Fall	15 weeks	87 hours	Tue/Thu	5p-8p	September 3 - December 10 + 1 Saturday	Tuition: \$1,545
Marysville	302	Wtr	10 weeks	63 hours	Tue/Thu	5p-8p	January 5 - March 9 + 1 Saturday	Tuition: \$1,545
Marysville	303	Spr	8 weeks	51 hours	Tue/Thu	5p-8p	April 6 - May 25 + 1 Saturday	Tuition: \$1,545
Tacoma	301	Fall	15 weeks	87 hours	Tue/Thu	5p-8p	September 3 - December 10 + 1 Saturday	Tuition: \$1,545
Tacoma	302	Wtr	10 weeks	63 hours	Tue/Thu	5p-8p	January 5 - March 9 + 1 Saturday	Tuition: \$1,545
Tacoma	303	Spr	8 weeks	51 hours	Tue/Thu	5p-8p	April 6 - May 25 + 1 Saturday	Tuition: \$1,545
Vancouver	301	Fall	15 weeks	87 hours	Tue/Thu	5p-8p	September 3 - December 10 + 1 Saturday	Tuition: \$1,545
Vancouver	302	Wtr	10 weeks	63 hours	Tue/Thu	5p-8p	January 5 - March 9 + 1 Saturday	Tuition: \$1,545
Vancouver	303	Spr	8 weeks	51 hours	Tue/Thu	5p-8p	April 6 - May 25 + 1 Saturday	Tuition: \$1,545
COMMERCIAL INSIDE WIREMAN LEVEL 4								
Bellevue	401	Fall	16 weeks	87 hours	Mon/Wed	5p-8p	September 2 - December 16 + 1 Saturday	Tuition: \$1,545
Bellevue	402	Wtr	9 weeks	63 hours	Mon/Wed	5p-8p	January 4 - March 3 + 2 Saturdays	Tuition: \$1,545
Bellevue	403	Spr	8 weeks	51 hours	Mon/Wed	5p-8p	April 5 - May 24 + 1 Saturday	Tuition: \$1,545
Marysville	401	Fall	15 weeks	87 hours	Tue/Thu	5p-8p	September 3 - December 10 + 1 Saturday	Tuition: \$1,545
Marysville	402	Wtr	9 weeks	63 hours	Tue/Thu	5p-8p	January 5 - March 2 + 2 Saturdays	Tuition: \$1,545
Marysville	403	Spr	8 weeks	51 hours	Tue/Thu	5p-8p	April 5 - May 24 + 1 Saturday	Tuition: \$1,545
Tacoma	401	Fall	16 weeks	87 hours	Mon/Wed	5p-8p	September 2 - December 16 + 1 Saturday	Tuition: \$1,545
Tacoma	402	Wtr	9 weeks	63 hours	Mon/Wed	5p-8p	January 4 - March 3 + 2 Saturdays	Tuition: \$1,545
Tacoma	403	Spr	8 weeks	51 hours	Mon/Wed	5p-8p	April 5 - May 24 + 1 Saturday	Tuition: \$1,545
Vancouver	401	Fall	15 weeks	87 hours	Tue/Thu	5p-8p	September 3 - December 10 + 1 Saturday	Tuition: \$1,545
Vancouver	402	Wtr	9 weeks	63 hours	Tue/Thu	5p-8p	January 5 - March 2 + 2 Saturdays	Tuition: \$1,545
Vancouver	403	Spr	8 weeks	51 hours	Tue/Thu	5p-8p	April 5 - May 24 + 1 Saturday	Tuition: \$1,545



All first year classes include  
**OSHA 10 for Construction**

