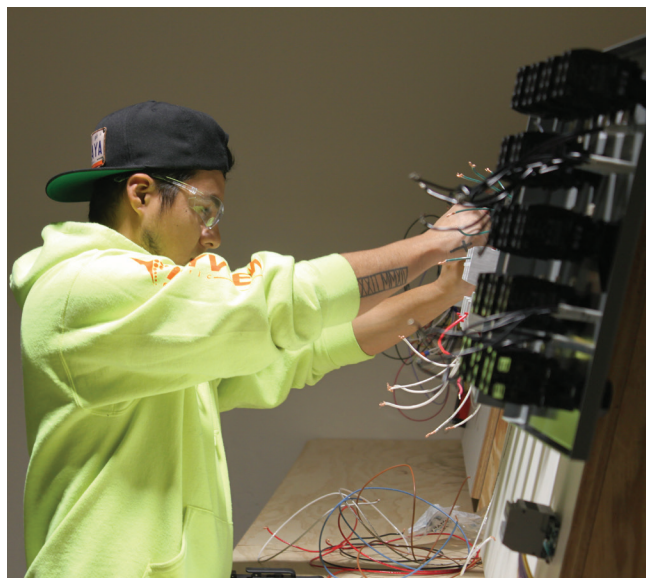


ELECTRICAL: COMMERCIAL INSIDE WIREMAN

Electricians install, maintain and repair electrical systems in and around structures. They install wiring and other electrical components such as motors, transformers, circuit breaker panels, switches and lighting by following blueprints, the National Electrical Code® and state and local codes. CITC provides a comprehensive, four-year, commercial inside wireman electrical curriculum that prepares workers for their “01” journeyman exam which allows them to perform all types of electrical work.

Note: CITC is transitioning from requiring paper NCCER Carpentry textbooks and NCCERConnect. Carpentry students are now required to purchase NCCERConnect only. NCCERConnect, which includes access to an e-text, will become the primary text materials for class and will be utilized for class and homework assignments. Students will be required to purchase an access code to NCCERConnect on the 1st day of class.

It is a requirement of CITC students to own or have access to a laptop or tablet computer with video, audio, camera, microphone, and wireless network access. Personal student laptop or tablet computer devices will be required in class each day. Additionally, all students will need to have access to a reliable internet source when classes begin in the fall. For additional information on the technical requirements for please contact the CITC office at (425) 454-2482.



APPRENTICESHIP MONTHLY WORK LOGS

Apprenticeship monthly work logs can be submitted to the apprenticeship department via email: **worklogs@citcwa.org**; fax: **(425) 289-0085** (this fax number does not receive texts); mail to the CITC main office: **1930 116th Ave NE Bellevue, WA 98004**.

NCCERCONNECT 2.0 WITH PEARSON eTEXT ACCESS CARD

NCCERConnect 2.0 is an online training program that enhances student learning with a range of visual, auditory, and interactive elements. Your Pearson eText Access Card will give you access to an eBook version of the textbook included in the package.

<https://registration.mypearson.com>



NCCER BOOKSTORE

20% OFF

Enter code
NCCER20
to receive 20% off
your NCCER books

*Includes free shipping
on your first order*

www.nccer.org/bookstore

COMMERCIAL INSIDE WIREMAN LEVEL 1

Minimum: 201 hours per year

COMMERCIAL INSIDE WIREMAN 101: FALL QUARTER

Students will begin with an orientation for the electrical trade, job site safety. Students will review RCW 19.28 and WAC 29-46B; job site safety practices and standards. Includes OSHA 10 Training. Students will review electrical mathematics, an introduction to electrical circuits, basic electrical theory (Ohms and Kirchhoff's Law), various circuits, and will begin using the National Electrical Code and Washington State rules (RCW/WAC). Emphasis will be placed on following safe working procedures. Lab date schedule will be provided at the beginning of the quarter. Scheduled dates may be adjusted at instructor's discretion.

COMMERCIAL INSIDE WIREMAN 102: WINTER QUARTER

Students continue extensive use of the National Electrical Code and Washington State rules (RCW/WAC), learn how to install various device boxes, how to hand bend small diameter conduit, and types & uses of raceways & fittings. Emphasis will be placed on following safe working procedures. Lab date schedule will be provided at the beginning of the quarter. Scheduled dates may be adjusted at instructor's discretion.

COMMERCIAL INSIDE WIREMAN 103: SPRING QUARTER

Students learn about the NEC requirements for conductors and cables, begin using basic electrical drawings, review code and installation requirements for residential electrical service, and learn to use multiple pieces of electrical test equipment. Emphasis will be placed on following safe working procedures. Lab date schedule will be provided at the beginning of the quarter. Scheduled dates may be adjusted at instructor's discretion.

BOOKS - COMMERCIAL INSIDE WIREMAN LEVEL 1

It is the student's responsibility to have the following book(s) on the first night of class:

REQUIRED TEXT	Soft Cover ISBN	Hard Cover ISBN
NCCER Core Curriculum Trainee Guide, 6th Edition, NCCERConnect 2.0 with eText	Purchase NCCERConnect through https://registration.mypearson.com/	
Electrical Level 1 Trainee Guide, 10th Edition, NCCERConnect 2.0 with eText	Purchase NCCERConnect through https://registration.mypearson.com/	
2020 National Electric Code (NEC)	978-1-4559-2297-0	
Delmar’s Standard Textbook of Electricity, 7th Edition		9781337900348
Washington State Electrical RCW/WACs	Free download available through L&I	
OPTIONAL TEXT		
NCCER Core Curriculum Trainee Guide, 6th Edition	9780137483341	9780137483358
NCCER Electrical Level 1 Trainee Guide, 10th Edition	9780136908531	9780136908654

*Purchase NCCERConnect through <https://registration.mypearson.com/>



COMMERCIAL INSIDE WIREMAN LEVEL 2

Minimum: 201 hours per year

COMMERCIAL INSIDE WIREMAN 201: FALL QUARTER

Students will complete a review of math concepts and code from the previous year; then discuss alternating current and how to apply Ohm's law; AC and DC motors through theory & application; electric lighting, and related NEC articles and RCW/WAC rules. Emphasis will be placed on following safe working procedures. Lab date schedule will be provided at the beginning of the quarter. Scheduled dates may be adjusted at instructor's discretion.

COMMERCIAL INSIDE WIREMAN 202: WINTER QUARTER

Students will discuss and perform conduit bending; sizing and installing pull and junction boxes; conductor installations; cable trays, and related NEC articles and RCW/WAC rules. Emphasis will be placed on following safe working procedures. Lab date schedule will be provided at the beginning of the quarter. Scheduled dates may be adjusted at instructor's discretion.

COMMERCIAL INSIDE WIREMAN 203: SPRING QUARTER

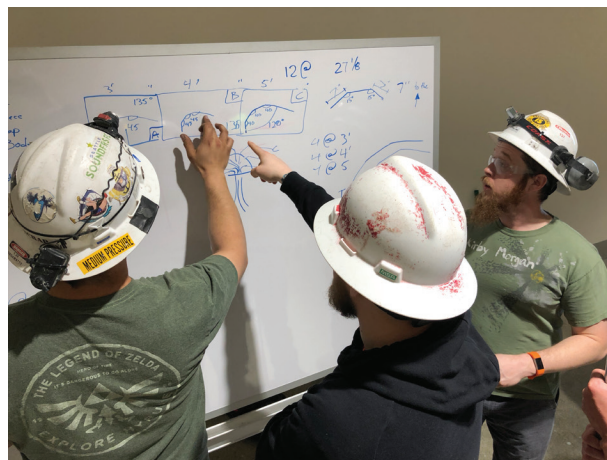
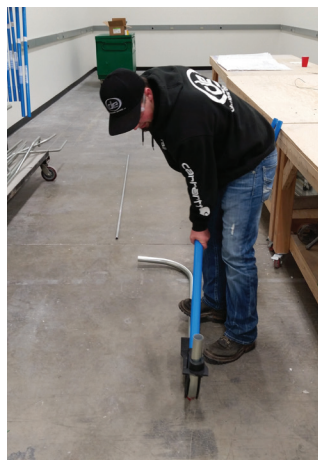
Students will learn about conductor terminations & splices; will discuss and perform grounding & bonding; principles, selection and installation of circuit breakers & fuses; control systems and fundamental concepts; and related NEC articles and RCW/WAC rules. Review of green building best practices and alternative energy sources will also be included. Emphasis will be placed on following safe working procedures. Lab date schedule will be provided at the beginning of the quarter. Scheduled dates may be adjusted at instructor's discretion.

BOOKS - COMMERCIAL INSIDE WIREMAN LEVEL 2

It is the student's responsibility to have the following book(s) on the first night of class:

REQUIRED TEXT	Soft Cover ISBN	Hard Cover ISBN
Electrical Level 2 Trainee Guide, 10th Edition, NCCERConnect 2.0 with eText	Purchase NCCERConnect through https://registration.mypearson.com/	
Delmar’s Standard Textbook of Electricity, 7th Edition		9781337900348
2020 National Electric Code (NEC)	978-1-4559-2297-0	
Soares Book on Grounding and Bonding, 14th Edition (NEC 2020)		9781890659851
Washington State Electrical RCW/WACs	Free download available through L&I	
OPTIONAL TEXT		
NCCER Electrical Level 2 Trainee Guide, 10th Edition	9780136897828	9780136897743

*Purchase NCCERConnect through <https://registration.myperson.com/>



COMMERCIAL INSIDE WIREMAN LEVEL 3

Minimum: 201 hours per year

COMMERCIAL INSIDE WIREMAN 301: FALL QUARTER

Students will heavily discuss and load calcs-branch and feeders circuits; conductor selection and sizing and voltage drop calculations; overcurrent protection; load calcs-feeders and services; and discuss distribution equipment commercial electrical services including commercial load calcs; and related NEC articles and RCW/WAC rules and all related code topics for all content. Emphasis will be placed on following safe working procedures. Lab date schedule will be provided at the beginning of the quarter. Scheduled dates may be adjusted at instructor's discretion.

COMMERCIAL INSIDE WIREMAN 302: WINTER QUARTER

Students will continue with distribution equipment and commercial electrical services then discuss basic electronic theory and electrical transformers including single phase, 3 phase, and specialty transformers. Students will then begin discussing Healthcare Facilities. All related NEC articles and RCW/WAC rules and all related code topics will be thoroughly reviewed. Emphasis will be placed on following safe working procedures. Lab date schedule will be provided at the beginning of the quarter. Scheduled dates may be adjusted at instructor's discretion.

COMMERCIAL INSIDE WIREMAN 303: SPRING QUARTER

Students begin with a review of Healthcare Facilities then discuss practical applications of lighting. Students will then discuss and perform communication cabling including voice, data & video; and related NEC articles and RCW/WAC rules and all related code topics; heat tracing and freeze protection and; medium voltage terminations. All related NEC articles and RCW/WAC rules and all related code topics will be thoroughly reviewed. Emphasis will be placed on following safe working procedures. Lab date schedule will be provided at the beginning of the quarter. Scheduled dates may be adjusted at instructor's discretion.

BOOKS - COMMERCIAL INSIDE WIREMAN LEVEL 3

It is the student's responsibility to have the following book(s) on the first night of class:

REQUIRED TEXT	Soft Cover ISBN	Hard Cover ISBN
Electrical Level 3 Trainee Guide, 10th Edition, NCCERConnect 2.0 with eText	Purchase NCCERConnect through https://registration.mypearson.com/	
Electrical Level 4 Trainee Guide, 10th Edition, NCCERConnect 2.0 with eText	Purchase NCCERConnect through https://registration.mypearson.com/	
2020 National Electric Code (NEC)	978-1-4559-2297-0	
Delmar’s Standard Textbook of Electricity, 6th Edition		978-1-285-85270-6
Washington State Electrical RCW/WACs	Free download available through L&I	
OPTIONAL TEXT		
NCCER Electrical Level 3 Trainee Guide, 10th Edition	9780136904809	
NCCER Electrical Level 4 Trainee Guide, 10th Edition	9780136910787	

*Purchase NCCERConnect through <https://registration.mypearson.com/>



COMMERCIAL INSIDE WIREMAN LEVEL 4

Minimum: 201 hours per year

COMMERCIAL INSIDE WIREMAN 401: FALL QUARTER

Students will begin study standby and emergency systems, control panels and notifications, HVAC controls, and related NEC articles and RCW/WAC rules and all related code topics. Students will then embark on a detailed study of NEC Article 430, motor theory & associated calculations, and other articles throughout the code pertaining to the installation of motors, controls and their circuits & feeders. Students will undertake a detailed study of NEC Articles 500,501,502,503 and the introduction to the Definitions of Classified Areas/Hazardous Locations. Students will begin building live motor control projects. Emphasis will be placed on following safe working procedures. Lab date schedule will be provided at the beginning of the quarter. Scheduled dates may be adjusted at instructor's discretion.

COMMERCIAL INSIDE WIREMAN 402: WINTER QUARTER

Students will continue building live motor control projects using motor control drawings in order to understand applications to different industries. Students will also study motor operation and maintenance. Students will complete approximately 25 Lab projects and a group motor control project.

COMMERCIAL INSIDE WIREMAN 403: SPRING QUARTER

Students will focus on a review of skills learned including NEC & RCW/WAC rules and related code topics to prepare students for their journeyman exam. The course will finish with a discussion on the fundamentals of crew leadership to prepare students for the expectations of potential management.

BOOKS - COMMERCIAL INSIDE WIREMAN LEVEL 4

It is the student's responsibility to have the following book(s) on the first night of class:

REQUIRED TEXT	Soft Cover ISBN	Hard Cover ISBN
Electrical Level 3 Trainee Guide, 9th Edition, NCCERConnect 2.0 with eText	Purchase NCCERConnect through https://registration.mypearson.com/	
Electrical Level 4 Trainee Guide, 9th Edition, NCCERConnect 2.0 with eText	Purchase NCCERConnect through https://registration.mypearson.com/	
2020 National Electric Code (NEC)	978-1-4559-2297-0	
Delmar's Standard Textbook of Electricity, 6th Edition		978-1-285-85270-6
Washington State Electrical RCW/WACs	Free download available through L&I	
Mike Holt's 2020 Guide to Electrical Exam Prep	978-0-9992038-7-3	
OPTIONAL TEXT		
NCCER Electrical Level 3 Trainee Guide, 9th Edition	978-013-473823-9	
NCCER Electrical Level 4 Trainee Guide, 9th Edition	978-013-473822-2	
2020 Key Word Index by Tom Henry	9781733462143	

*Purchase NCCERConnect through <https://registration.mypearson.com/>

Electrical: Commercial Inside Wireman Instructors

As a part of our dedication and commitment to training, we take pride in delivering top quality instructors. CITC's instructors are highly skilled journey-level workers who bring their knowledge and years of trade experience into the classroom. All CITC instructors have been certified certification by the National Center for Construction Education and Research.

Jeffrey Ault started in the trade in 1996 and joined the CITC faculty in 2016.

Fred Bedell started in the trade in 1984 and became a CITC faculty member in 2015.

Derek Beresford started in the trade in 1999. Joined the CITC faculty in 2014.

Joseph Harrison started in the trade in 1999 and joined the CITC faculty in 2018. CITC Instructor of the Year in 2021-2022.

Jerry Katona started in the trade in 1965. Graduate from North Seattle Community College in 1976 with degree in electrical theory. Admin license in 1981 and master electrician license in 2003. Joined the CITC faculty in 2017.

Allan Kush started in the trade in 1982 and joined the CITC faculty in 2018.

Brandon Konold started in the trade in 2007. Graduated from CITC in 2011. Joined CITC the faculty 2015.

Steve King started in the trade in 1996. Technical College graduate 2001. Joined the CITC faculty in 2017.

Darick Lopez started in the trade in 1994. Master electrician license in 2015. Joined the CITC faculty in 2020.

Gerald Morman started in the trade in 1984. Electrical Engineering graduate, 2014. Joined the CITC faculty in 2020.

Jeff Shaw started in the trade in 2004 and joined the CITC faculty in 2017.

Lara Siegfried started in the trade in 2010. CITC graduate in 2014. CITC faculty since 2017. CITC Instructor of the Year in 2018-2019.

Shane Taylor started in the trade in 2003. Joined the CITC faculty in 2017.

Jai Briar started in the trade in 2012. Joined the CITC faculty in 2021.

Jason Nelson started in the trade in 2006. Joined the CITC faculty in 2021.

Quincy Ross started in the trade in 2013. Joined the CITC faculty in 2022.

Alex Johnson started in the trade in 2002. Joined the CITC faculty in 2022.

Brad McVey started in the trade in 1998. Joined the CITC faculty in 2021.

Tom Spisak started in the trade in 2000. Joined the CITC faculty in 2021.

Rick St. Vincent started in the trade in 2001. Graduated from FAEC Apprenticeship Program in 2005 and became a CITC faculty member in 2006. Received CITC Instructor of the Year award in 2012.

Commercial Inside Wireman Schedule & Tuition

Eastern Washington Region

COMMERCIAL INSIDE WIREMAN LEVEL 1								
Pasco 1A	101	Fall	13 weeks	81 hours	Fri/Sat	8a-5p	September 16 – December 10 + Assignments	Tuition: \$1,325
Pasco 1A	102	Wtr	8 weeks	60 hours	Fri/Sat	8a-5p	January 13 – March 11 + Assignments	Tuition: \$1,325
Pasco 1A	103	Spr	9 weeks	60 hours	Fri/Sat	8a-5p	April 14 – June 10 + Assignments	Tuition: \$1,325
Pasco 1B	401	Fall	13 weeks	81 hours	Fri/Sat	8a-5p	September 9 – December 3 + Assignments	Tuition: \$1,325
Pasco 1B	402	Wtr	8 weeks	60 hours	Fri/Sat	8a-5p	January 6 – March 4 + Assignments	Tuition: \$1,325
Pasco 1B	403	Spr	9 weeks	60 hours	Fri/Sat	8a-5p	April 7 – June 3 + Assignments	Tuition: \$1,325
Spokane 1A	101	Fall	13 weeks	81 hours	Fri/Sat	8a-5p	September 9 – December 3 + Assignments	Tuition: \$1,325
Spokane 1A	102	Wtr	8 weeks	60 hours	Fri/Sat	8a-5p	January 13 – March 11 + Assignments	Tuition: \$1,325
Spokane 1A	103	Spr	9 weeks	60 hours	Fri/Sat	8a-5p	April 14 – June 3 + Assignments	Tuition: \$1,325
Spokane 1B	101	Fall	12 weeks	81 hours	Fri/Sat	8a-5p	September 23 – December 17 + Assignments	Tuition: \$1,325
Spokane 1B	102	Wtr	8 weeks	60 hours	Fri/Sat	8a-5p	January 27 – March 25 + Assignments	Tuition: \$1,325
Spokane 1B	103	Spr	9 weeks	60 hours	Fri/Sat	8a-5p	April 28 – June 17 + Assignments	Tuition: \$1,325
Spokane 1C	101	Fall	12 weeks	81 hours	Fri/Sat	8a-5p	September 16 – December 10 + Assignments	Tuition: \$1,325
Spokane 1C	102	Wtr	8 weeks	60 hours	Fri/Sat	8a-5p	January 20 – March 18 + Assignments	Tuition: \$1,325
Spokane 1C	103	Spr	9 weeks	60 hours	Fri/Sat	8a-5p	April 21 – June 10 + Assignments	Tuition: \$1,325
COMMERCIAL INSIDE WIREMAN LEVEL 2								
Pasco	201	Fall	13 weeks	81 hours	Fri/Sat	8a-5p	September 23 – December 17 + Assignments	Tuition: \$1,325
Pasco	202	Wtr	8 weeks	60 hours	Fri/Sat	8a-5p	January 27 – March 25 + Assignments	Tuition: \$1,325
Pasco	203	Spr	9 weeks	60 hours	Fri/Sat	8a-5p	April 28 – June 17 + Assignments	Tuition: \$1,325
Spokane 2A	201	Fall	13 weeks	81 hours	Fri/Sat	8a-5p	September 9 – December 3 + Assignments	Tuition: \$1,325
Spokane 2A	202	Wtr	8 weeks	60 hours	Fri/Sat	8a-5p	January 6 – March 4 + Assignments	Tuition: \$1,325
Spokane 2A	203	Spr	9 weeks	60 hours	Fri/Sat	8a-5p	April 7 – June 3 + Assignments	Tuition: \$1,325
Spokane 2B	201	Fall	13 weeks	81 hours	Fri/Sat	8a-5p	September 23 – December 17 + Assignments	Tuition: \$1,325
Spokane 2B	202	Wtr	8 weeks	60 hours	Fri/Sat	8a-5p	January 20 – March 18 + Assignments	Tuition: \$1,325
Spokane 2B	203	Spr	9 weeks	60 hours	Fri/Sat	8a-5p	April 21 – June 17 + Assignments	Tuition: \$1,325
COMMERCIAL INSIDE WIREMAN LEVEL 3								
Pasco 3A	301	Fall	13 weeks	81 hours	Fri/Sat	7a-4p	September 16 – December 10 + Assignments	Tuition: \$1,325
Pasco 3A	302	Wtr	8 weeks	60 hours	Fri/Sat	7a-4p	January 13– March 11 + Assignments	Tuition: \$1,325
Pasco 3A	303	Spr	9 weeks	60 hours	Fri/Sat	7a-4p	April 14– June 10 + Assignments	Tuition: \$1,325
Pasco 3B	301	Fall	13 weeks	81 hours	Fri/Sat	7a-4p	September 23– December 17 + Assignments	Tuition: \$1,325
Pasco 3B	302	Wtr	8 weeks	60 hours	Fri/Sat	7a-4p	January 27 – March 25 + Assignments	Tuition: \$1,325
Pasco 3B	303	Spr	9 weeks	60 hours	Fri/Sat	7a-4p	April 28 – June 17 + Assignments	Tuition: \$1,325
Spokane 3A	301	Fall	13 weeks	81 hours	Fri/Sat	8a-5p	September 16 – December 10 + Assignments	Tuition: \$1,325
Spokane 3A	302	Wtr	8 weeks	60 hours	Fri/Sat	8a-5p	January 13 – March 11 + Assignments	Tuition: \$1,325
Spokane 3A	303	Spr	9 weeks	60 hours	Fri/Sat	8a-5p	April 14 – June 10 + Assignments	Tuition: \$1,325
Spokane 3B	301	Fall	13 weeks	81 hours	Fri/Sat	8a-5p	September 23 – December 17 + Assignments	Tuition: \$1,325
Spokane 3B	302	Wtr	8 weeks	60 hours	Fri/Sat	8a-5p	January 20 – March 18 + Assignments	Tuition: \$1,325
Spokane 3B	303	Spr	9 weeks	60 hours	Fri/Sat	8a-5p	April 21 – June 17 + Assignments	Tuition: \$1,325

Commercial Inside Wireman Schedule & Tuition *continued*

Easter Washington Region *continued*

COMMERCIAL INSIDE WIREMAN LEVEL 4								
Pasco 4A	401	Fall	13 weeks	81 hours	Fri/Sat	7a-4p	September 9 – December 3 + Assignments	Tuition: \$1,325
Pasco 4A	402	Wtr	8 weeks	60 hours	Fri/Sat	7a-4p	January 6 – March 4 + Assignments	Tuition: \$1,325
Pasco 4A	403	Spr	9 weeks	60 hours	Fri/Sat	7a-4p	April 7 – June 3 + Assignments	Tuition: \$1,325
Pasco 4B	401	Fall	13 weeks	81 hours	Fri/Sat	7a-4p	September 16 – December 10 + Assignments	Tuition: \$1,325
Pasco 4B	403	Wtr	8 weeks	60 hours	Fri/Sat	7a-4p	January 13 – March 11 + Assignments	Tuition: \$1,325
Pasco 4B	403	Spr	9 weeks	60 hours	Fri/Sat	7a-4p	April 14 – June 10 + Assignments	Tuition: \$1,325
Spokane 4A	401	Fall	13 weeks	81 hours	Fri/Sat	8a-5p	September 9 – December 3 + Assignments	Tuition: \$1,325
Spokane 4A	402	Wtr	8 weeks	60 hours	Fri/Sat	8a-5p	January 6 – March 4 + Assignments	Tuition: \$1,325
Spokane 4A	403	Spr	9 weeks	60 hours	Fri/Sat	8a-5p	April 7 – June 3 + Assignments	Tuition: \$1,325
Spokane 4B	401	Fall	13 weeks	81 hours	Fri/Sat	8a-5p	September 16 – December 10 + Assignments	Tuition: \$1,325
Spokane 4B	402	Wtr	8 weeks	60 hours	Fri/Sat	8a-5p	January 13 – March 11 + Assignments	Tuition: \$1,325
Spokane 4B	403	Spr	9 weeks	60 hours	Fri/Sat	8a-5p	April 14 – June 10 + Assignments	Tuition: \$1,325

Western Washington Region

COMMERCIAL INSIDE WIREMAN LEVEL 1								
Bellevue 1A	101	Fall	14 weeks	87 hours	Mon/Wed	5:30p-9p	September 12 – December 14	Tuition: \$1,750
Bellevue 1A	102	Wtr	9 weeks	63 hours	Mon/Wed	5:30p-9p	January 9 – March 22	Tuition: \$1,750
Bellevue 1A	103	Spr	8 weeks	51 hours	Mon/Wed	5:30p-9p	April 10 – May 24	Tuition: \$1,750
Bellevue 1B	101	Fall	14 weeks	87 hours	Tue/Thu	5:30p-9p	September 13 – December 13	Tuition: \$1,750
Bellevue 1B	102	Wtr	8 weeks	63 hours	Tue/Thu	5:30p-9p	January 10 – March 13	Tuition: \$1,750
Bellevue 1B	103	Spr	7 weeks	51 hours	Tue/Thu	5:30p-9p	April 18 – May 18 + 2 Saturdays	Tuition: \$1,750
Bellevue 1C	101	Fall	14 weeks	81 hours	Fri/Sat	8a-5p	September 9 – December 3 + Assignments	Tuition: \$1,750
Bellevue 1C	102	Wtr	9 weeks	60 hours	Fri/Sat	8a-5p	January 6 – March 4 + Assignments	Tuition: \$1,750
Bellevue 1C	103	Spr	8 weeks	60 hours	Fri/Sat	8a-5p	April 7 – June 3 + Assignments	Tuition: \$1,750
Bellingham	101	Fall	13 weeks	86 hours	Mon/Wed	5:30p-9p	September 19 – December 5 + 2 Saturdays	Tuition: \$1,750
Bellingham	102	Wtr	9 weeks	65 hours	Mon/Wed	5:30p-9p	January 9 – March 1 + 2 Saturdays	Tuition: \$1,750
Bellingham	103	Spr	6 weeks	50 hours	Mon/Wed	5:30p-9p	April 17 – May 17 + 2 Saturdays	Tuition: \$1,750
Marysville 1A	101	Fall	14 weeks	87 hours	Mon/Wed	5:30p-9p	September 12 – December 14	Tuition: \$1,750
Marysville 1A	102	Wtr	9 weeks	63 hours	Mon/Wed	5:30p-9p	January 9 – March 22	Tuition: \$1,750
Marysville 1A	103	Spr	8 weeks	51 hours	Mon/Wed	5:30p-9p	April 10 – May 24	Tuition: \$1,750
Marysville 1B	101	Fall	12 weeks	81 hours	Fri/Sat	8a-5p	September 9 – December 3 + Assignments	Tuition: \$1,750
Marysville 1B	102	Wtr	8 weeks	60 hours	Fri/Sat	8a-5p	January 6 – March 4 + Assignments	Tuition: \$1,750
Marysville 1B	103	Spr	9 weeks	60 hours	Fri/Sat	8a-5p	April 7 – June 3 + Assignments	Tuition: \$1,750
Tacoma 1A	101	Fall	14 weeks	87 hours	Mon/Wed	5:30p-9p	September 12 – December 14	Tuition: \$1,750
Tacoma 1A	102	Wtr	9 weeks	63 hours	Mon/Wed	5:30p-9p	January 9 – March 22	Tuition: \$1,750
Tacoma 1A	103	Spr	8 weeks	51 hours	Mon/Wed	5:30p-9p	April 10 – May 24	Tuition: \$1,750
Tacoma 1B	101	Fall	14 weeks	87 hours	Tue/Thu	5:30p-9p	September 13 – December 13	Tuition: \$1,750
Tacoma 1B	102	Wtr	9 weeks	63 hours	Tue/Thu	5:30p-9p	January 10 – March 13	Tuition: \$1,750
Tacoma 1B	103	Spr	8 weeks	51 hours	Tue/Thu	5:30p-9p	April 18 – May 18 + 2 Saturdays	Tuition: \$1,750
Vancouver	101	Fall	14 weeks	87 hours	Mon/Wed	5:30p-9p	September 12 – December 14	Tuition: \$1,750
Vancouver	102	Wtr	9 weeks	63 hours	Mon/Wed	5:30p-9p	January 9 – March 22	Tuition: \$1,750
Vancouver	103	Spr	8 weeks	51 hours	Mon/Wed	5:30p-9p	April 10 – May 24	Tuition: \$1,750

Commercial Inside Wireman Schedule & Tuition *continued*

Western Washington Region *continued*

COMMERCIAL INSIDE WIREMAN LEVEL 2									
Bellevue 2A	201	Fall	14 weeks	87 hours	Mon/Wed	5:30p-9p	September 12 – December 14		Tuition: \$1,750
Bellevue 2A	202	Wtr	9 weeks	63 hours	Mon/Wed	5:30p-9p	January 9 – March 22		Tuition: \$1,750
Bellevue 2A	203	Spr	8 weeks	51 hours	Mon/Wed	5:30p-9p	April 10 – May 24		Tuition: \$1,750
Bellevue 2B	201	Fall	14 weeks	87 hours	Tue/Thu	5:30p-9p	September 13 – December 13		Tuition: \$1,750
Bellevue 2B	202	Wtr	9 weeks	63 hours	Tue/Thu	5:30p-9p	January 10 – March 13		Tuition: \$1,750
Bellevue 2B	203	Spr	8 weeks	51 hours	Tue/Thu	5:30p-9p	April 18 – May 18 + 2 Saturdays		Tuition: \$1,750
Bellingham	201	Fall	12 weeks	86 hours	Tue/Thu	5:30p-9p	September 20 – December 6 + 2 Saturdays		Tuition: \$1,750
Bellingham	202	Wtr	7 weeks	65 hours	Tue/Thu	5:30p-9p	January 10 – February 28 + 2 Saturdays		Tuition: \$1,750
Bellingham	203	Spr	6 weeks	50 hours	Tue/Thu	5:30p-9p	April 18 – May 18 + 2 Saturdays		Tuition: \$1,750
Marysville	201	Fall	14 weeks	81 hours	Fri/Sat	8a-5p	September 16 – December 10 + Assignments		Tuition: \$1,750
Marysville	202	Wtr	9 weeks	60 hours	Fri/Sat	8a-5p	January 13 – March 11 + Assignments		Tuition: \$1,750
Marysville	203	Spr	8 weeks	60 hours	Fri/Sat	8a-5p	April 14 – June 10 + Assignments		Tuition: \$1,750
Tacoma 2A	201	Fall	14 weeks	87 hours	Mon/Wed	5:30p-9p	September 12 – December 14		Tuition: \$1,750
Tacoma 2A	202	Wtr	9 weeks	63 hours	Mon/Wed	5:30p-9p	January 9 – March 22		Tuition: \$1,750
Tacoma 2A	203	Spr	8 weeks	51 hours	Mon/Wed	5:30p-9p	April 10 – May 24		Tuition: \$1,750
Tacoma 2B	201	Fall	14 weeks	87 hours	Tue/Thu	5:30p-9p	September 13 – December 13		Tuition: \$1,750
Tacoma 2B	202	Wtr	9 weeks	63 hours	Tue/Thu	5:30p-9p	January 10 – March 13		Tuition: \$1,750
Tacoma 2B	203	Spr	8 weeks	51 hours	Tue/Thu	5:30p-9p	April 18 – May 18 + 2 Saturdays		Tuition: \$1,750
Vancouver	201	Fall	14 weeks	87 hours	Mon/Wed	5:30p-9p	September 12 – December 14		Tuition: \$1,750
Vancouver	202	Wtr	9 weeks	63 hours	Mon/Wed	5:30p-9p	January 9 – March 22		Tuition: \$1,750
Vancouver	203	Spr	8 weeks	51 hours	Mon/Wed	5:30p-9p	April 10 – May 24		Tuition: \$1,750
COMMERCIAL INSIDE WIREMAN LEVEL 3									
Bellevue 3A	301	Fall	14 weeks	87 hours	Mon/Wed	5:30p-9p	September 12 – December 14		Tuition: \$1,750
Bellevue 3A	302	Wtr	9 weeks	63 hours	Mon/Wed	5:30p-9p	January 9 – March 22		Tuition: \$1,750
Bellevue 3A	303	Spr	8 weeks	51 hours	Mon/Wed	5:30p-9p	April 18 – May 18 + 2 Saturdays		Tuition: \$1,750
Bellevue 3B	301	Fall	14 weeks	87 hours	Tue/Thu	5:30p-9p	September 13 – December 13		Tuition: \$1,750
Bellevue 3B	302	Wtr	9 weeks	63 hours	Tue/Thu	5:30p-9p	January 10 – March 13		Tuition: \$1,750
Bellevue 3B	303	Spr	8 weeks	51 hours	Tue/Thu	5:30p-9p	April 10 – May 24 + 2 Saturdays		Tuition: \$1,750
Marysville	301	Fall	13 weeks	81 hours	Fri/Sat	8a-5p	September 23 – December 17 + Assignments		Tuition: \$1,750
Marysville	302	Wtr	8 weeks	630hours	Fri/Sat	8a-5p	January 20 – March 18 + Assignments		Tuition: \$1,750
Marysville	303	Spr	9 weeks	60 hours	Fri/Sat	8a-5p	April 21 – June 17 + Assignments		Tuition: \$1,750
Tacoma	301	Fall	14 weeks	87 hours	Mon/Wed	5:30p-9p	September 12 – December 14		Tuition: \$1,750
Tacoma	302	Wtr	9 weeks	63 hours	Mon/Wed	5:30p-9p	January 9 – March 22		Tuition: \$1,750
Tacoma	303	Spr	8 weeks	51 hours	Mon/Wed	5:30p-9p	April 10 – May 24		Tuition: \$1,750



All first year classes include
OSHA 10 for Construction



Commercial Inside Wireman Schedule & Tuition *continued*

Western Washington Region continued

COMMERCIAL INSIDE WIREMAN LEVEL 4									
Bellevue 4A	401	Fall	14 weeks	87 hours	Tue/Thu	5:30p-9p	September 12 – December 14		Tuition: \$1,750
Bellevue 4A	402	Wtr	9 weeks	63 hours	Tue/Thu	5:30p-9p	January 9 – March 22		Tuition: \$1,750
Bellevue 4A	403	Spr	8 weeks	51 hours	Tue/Thu	5:30p-9p	April 18 – May 18 + 2 Saturdays		Tuition: \$1,750
Bellevue 4B	401	Fall	14 weeks	87 hours	Tue/Thu	5:30p-9p	September 13 – December 13		Tuition: \$1,750
Bellevue 4B	402	Wtr	9 weeks	63 hours	Tue/Thu	5:30p-9p	January 10 – March 13		Tuition: \$1,750
Bellevue 4B	403	Spr	8 weeks	51 hours	Tue/Thu	5:30p-9p	April 18 – May 18 + 2 Saturdays		Tuition: \$1,750
Marysville 4A	401	Fall	14 weeks	87 hours	Mon/Wed	5:30p-9p	September 12 – December 14		Tuition: \$1,750
Marysville 4A	402	Wtr	9 weeks	63 hours	Mon/Wed	5:30p-9p	January 9 – March 22		Tuition: \$1,750
Marysville 4A	403	Spr	8 weeks	51 hours	Mon/Wed	5:30p-9p	April 10 – May 24		Tuition: \$1,750
Marysville 4B	401	Fall	13 weeks	81 hours	Fri/Sat	8a-5p	September 9 – December 3 + Assignments		Tuition: \$1,750
Marysville 4B	402	Wtr	8 weeks	60 hours	Fri/Sat	8a-5p	January 6 – March 4 + Assignments		Tuition: \$1,750
Marysville 4B	403	Spr	9 weeks	60 hours	Fri/Sat	8a-5p	April 7 – June 3 + Assignments		Tuition: \$1,750
Tacoma	401	Fall	14 weeks	87 hours	Mon/Wed	5:30p-9p	September 12 – December 14		Tuition: \$1,750
Tacoma	402	Wtr	9 weeks	63 hours	Mon/Wed	5:30p-9p	January 9 – March 22		Tuition: \$1,750
Tacoma	403	Spr	8 weeks	51 hours	Mon/Wed	5:30p-9p	April 10 – May 24		Tuition: \$1,750
Vancouver	401	Fall	14 weeks	87 hours	Mon/Wed	5:30p-9p	September 12 – December 14		Tuition: \$1,750
Vancouver	402	Wtr	9 weeks	63 hours	Mon/Wed	5:30p-9p	January 9 – March 22		Tuition: \$1,750
Vancouver	403	Spr	8 weeks	51 hours	Mon/Wed	5:30p-9p	April 10 – May 24		Tuition: \$1,750



All first year classes include
OSHA 10 for Construction



ELECTRICAL: LOW ENERGY/SOUND & COMMUNICATION TECHNICIAN

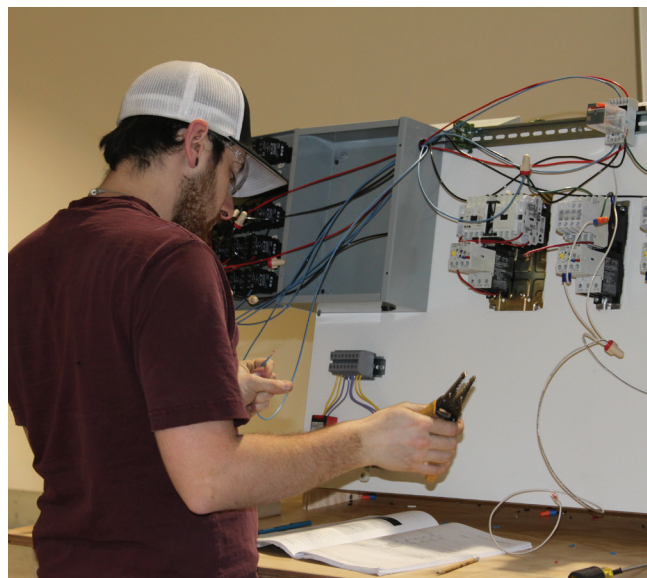
The low energy/sound and communication technician tasks include the installing, servicing and maintaining of systems for sound, audio, video, fire & burglar alarm systems, CCTV security, access control, fiber optics, telephone/data and computer systems integration.

Their work generally focuses on the distribution of low-voltage signals among microprocessor-based devices and controls. The technician's duties generally include installing, connecting, calibrating, and servicing products that move voice, video, audio, and data signals, and products that control mechanical and electrical apparatuses. CITC provides a comprehensive, three year Electrical curriculum that prepares workers for their "06" electrical journeyman exam.

Students will be required to have access to a computer or tablet device with a working camera and microphone. Additionally, all students will need to have access to a reliable internet source when classes begin in the fall. For additional information on the technical requirements for this program please contact the CITC office at (425) 454-2482.

Note: It is crucial that students have the required personal laptop or tablet computer on the 1st day of class. Students who do not have an appropriate laptop or tablet may be dismissed from class and charged with an absence.

CITC strives to offer a variety of class schedules and locations for students to select from. To ensure your place in a class of your choice CITC encourages your registration as soon as registration opens. Registration is on a first come, first serve basis. If the class you have selected is full, you will be transferred into the next available class at the CITC facility nearest your home zip code.



APPRENTICESHIP MONTHLY WORK LOGS

Apprenticeship monthly work logs can be submitted to the apprenticeship department via email: **worklogs@citcwa.org**; fax: **(425) 289-0085** (this fax number does not receive texts); mail to the CITC main office: **1930 116th Ave NE Bellevue, WA 98004**.

NCCERCONNECT 2.0 WITH PEARSON eTEXT ACCESS CARD

NCCERConnect 2.0 is an online training program that enhances student learning with a range of visual, auditory, and interactive elements. Your Pearson eText Access Card will give you access to an eBook version of the textbook included in the package.

<https://registration.mypearson.com>



NCCER BOOKSTORE

20% OFF

Enter code
NCCER20
to receive 20% off
your NCCER books

*Includes free shipping
on your first order*

www.nccer.org/bookstore

LOW ENERGY/SOUND & COMMUNICATION TECHNICIAN LEVEL 1

Minimum: 201 hours per year

LOW ENERGY/SOUND & COMMUNICATION TECHNICIAN 101: FALL QUARTER

Students will begin with an orientation for the electrical trade, job site safety. Students will review RCW 19.28 and WAC 29-46B; job site safety practices and standards. Course includes OSHA 10 and 1st Aid / CPR training. Students will receive an overview of the electrical trade and will learn; electrical safety; review electrical mathematics; an introduction to electrical circuits, basic electrical theory (Ohms and Kirchhoff's Law), various circuits; will be introduced to electrical drawings; electrical pathways and spaces; hand bending of conduit.

LOW ENERGY/SOUND & COMMUNICATION TECHNICIAN 102: WINTER QUARTER

Students will be introduced to the 2020 NEC and Washington State rules (RCW/WAC) and will learn; low voltage cabling; DC circuits; AC circuits; and switching devices and timers. Lab date schedule will be provided at the beginning of the quarter. Scheduled dates may be adjusted at instructor's discretion.

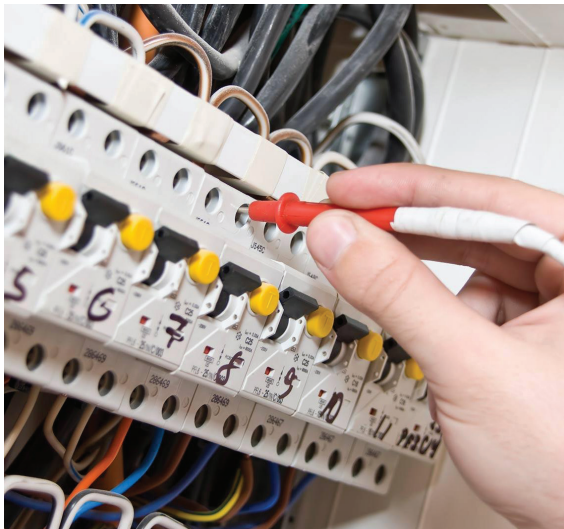
LOW ENERGY/SOUND & COMMUNICATION TECHNICIAN 103: SPRING QUARTER

Students will learn about semiconductors and integrated circuits; codes and standards and ana; wire and cable terminations; and electrical test equipment. Lab date schedule will be provided at the beginning of the quarter. Scheduled dates may be adjusted at instructor's discretion.

BOOKS - LOW ENERGY/SOUND & COMMUNICATION TECHNICIAN LEVEL 1

It is the student's responsibility to have the following book(s) on the first night of class:

REQUIRED TEXT	Soft Cover ISBN	Hard Cover ISBN
NCCER Electrical Level 1 Trainee Guide, 10th Edition	9780136908531	9780136908654
NCCER Electronic Systems Technician Level 3 Trainee Guide, 4th Edition	9780136844518	
2020 National Electric Code (NEC)	9781455922970	
NFPA 72: National Fire Alarm and Signaling Code Handbook	9781455920563	
Washington State Electrical RCW/WACs	Free download available through L&I	



LOW ENERGY/SOUND & COMMUNICATION TECHNICIAN LEVEL 2

Minimum: 201 hours per year

LOW ENERGY/SOUND & COMMUNICATION TECHNICIAN 201: FALL QUARTER

Students will learn about; power quality and grounding; buses and networks; fiber optics; and wireless communication Lab date schedule will be provided at the beginning of the quarter. Scheduled dates may be adjusted at instructor's discretion.

LOW ENERGY/SOUND & COMMUNICATION TECHNICIAN 202: WINTER QUARTER

Students will learn about; rack assemblies; maintenance and repair of low voltage systems; and will begin learning about audio and video systems. Includes an introduction to green building practices. Lab date schedule will be provided at the beginning of the quarter. Scheduled dates may be adjusted at instructor's discretion.

LOW ENERGY/SOUND & COMMUNICATION TECHNICIAN 203: SPRING QUARTER

Students will finish learning about audio and video systems; will learn about broadband systems; and telecommunications systems. Lab date schedule will be provided at the beginning of the quarter. Scheduled dates may be adjusted at instructor's discretion.

BOOKS - LOW ENERGY/SOUND & COMMUNICATION TECHNICIAN LEVEL 2

It is the student's responsibility to have the following book(s) on the first night of class:

REQUIRED TEXT	Soft Cover ISBN	Hard Cover ISBN
NCCER Electrical Level 2 Trainee Guide, 10th Edition	9780136897828	9780136897743
NCCER Electronic Systems Technician Level 4 Trainee Guide, 4th Edition	9780136844150	
2020 National Electric Code (NEC)	978-1-4559-2297-0	
NFPA 72: National Fire Alarm and Signaling Code Handbook	978-1-4559-2056-3	

LOW ENERGY/SOUND & COMMUNICATION TECHNICIAN LEVEL 3

Minimum: 201 hours per year

LOW ENERGY SOUND & COMMUNICATION TECHNICIAN 301: FALL QUARTER

This quarter covers the design, installation guidelines and troubleshooting of intrusion detection systems; also the design, installation and troubleshooting of residential and commercial fire alarms. Lab date schedule will be provided at the beginning of the quarter. Scheduled dates may be adjusted at instructor's discretion.

LOW ENERGY/SOUND & COMMUNICATION TECHNICIAN 302: WINTER QUARTER

Students will study the system requirements, installation requirements and code specifications of nurse call and signaling systems found in health care facilities; review the installation and configuration, testing and troubleshooting of closed circuit TV systems in various sized facilities; learn about the installation practices and electrical codes related to various access control systems. Lab date schedule will be provided at the beginning of the quarter. Scheduled dates may be adjusted at instructor's discretion.

LOW ENERGY/SOUND & COMMUNICATION TECHNICIAN 303: SPRING QUARTER

Students will learn about the design and installation best practices for building networks in smart houses and businesses; participate in a comprehensive review of all related NEC code and associated Oregon and Washington state rules in preparation for licensing exams. Lab date schedule will be provided at the beginning of the quarter. Scheduled dates may be adjusted at instructor's discretion.



All first year classes include
OSHA 10 for Construction



BOOKS - LOW ENERGY/SOUND & COMMUNICATION TECHNICIAN LEVEL 3

It is the student's responsibility to have the following book(s) on the first night of class:

REQUIRED TEXT	Soft Cover ISBN	Hard Cover ISBN
NCCER Electrical Level 1 Trainee Guide, 10th Edition	9780136908531	9780136908654
NCCER Electrical Level 2 Trainee Guide, 10th Edition	9780136897828	9780136897743
NCCER Electronic Systems Technician Level 3 Trainee Guide, 4th Edition	9780136844518	
NCCER Electronic Systems Technician Level 4 Trainee Guide, 4th Edition	9780136844150	
2020 National Electric Code (NEC)	978-1-4559-2297-0	
NFPA 72: National Fire Alarm and Signaling Code Handbook	978-1-4559-2056-3	

Low Energy/Sound & Communication Technician Instructors

As a part of our dedication and commitment to training, we take pride in delivering top quality instructors. CITC's instructors are highly skilled journey-level workers who bring their knowledge and years of trade experience into the classroom. All CITC instructors have been certified certification by the National Center for Construction Education and Research.

Lloyd Hawes started in the trade in 1989. Became CITC Faculty member in 2020.

Tom Brown started in the trade in 1979. Owner operator of a limited energy / sound & communication business since 1989. EL-06 Master Electrician. Joined the CITC faculty in 2019.

Mike Patterson has over 30 years in the electrical industry. Became CITC Faculty member in 2022

Low Energy/Sound & Communication Technician Schedule & Tuition

Eastern Washington Region

LOW ENERGY/SOUND & COMMUNICATION TECHNICIAN LEVEL 1								
Spokane	101	Fall	13 weeks	87 hours	Fri/Sat	8a-5p	September 9 – December 3 + Assignments	Tuition: \$1,325
Spokane	102	Wtr	8 weeks	63 hours	Fri/Sat	8a-5p	January 6 – March 4 + Assignments	Tuition: \$1,325
Spokane	103	Spr	9 weeks	51 hours	Fri/Sat	8a-5p	March 31 – June 3 + Assignments	Tuition: \$1,325

Western Washington Region

LOW ENERGY/SOUND & COMMUNICATION TECHNICIAN LEVEL 1								
Marysville	101	Fall	13 weeks	87 hours	Fri/Sat	8a-5p	September 9 – December 3 + Assignments	Tuition: \$1,750
Marysville	102	Wtr	8 weeks	63 hours	Fri/Sat	8a-5p	January 6 – March 4 + Assignments	Tuition: \$1,750
Marysville	103	Spr	9 weeks	51 hours	Fri/Sat	8a-5p	April 7 – June 3 + Assignments	Tuition: \$1,750
LOW ENERGY/SOUND & COMMUNICATION TECHNICIAN LEVEL 2								
Marysville	201	Fall	13 weeks	87 hours	Fri/Sat	8a-5p	September 9 – December 3 + Assignments	Tuition: \$1,750
Marysville	202	Wtr	8 weeks	63 hours	Fri/Sat	8a-5p	January 6 – March 4 + Assignments	Tuition: \$1,750
Marysville	203	Spr	9 weeks	51 hours	Fri/Sat	8a-5p	April 7 – June 3 + Assignments	Tuition: \$1,750
LOW ENERGY/SOUND & COMMUNICATION TECHNICIAN LEVEL 3								
Marysville	301	Fall	13 weeks	87 hours	Fri/Sat	8a-5p	September 9 – December 10 + Assignments	Tuition: \$1,750
Marysville	302	Wtr	8 weeks	63 hours	Fri/Sat	8a-5p	January 6 – March 4 + Assignments	Tuition: \$1,750
Marysville	303	Spr	9 weeks	51 hours	Fri/Sat	8a-5p	April 7 – June 3 + Assignments	Tuition: \$1,750

ELECTRICAL: RESIDENTIAL WIREMAN

Residential wiremen perform many of the same tasks as inside wiremen, but limited to residential environments such as single-family dwellings, apartment complexes and condominiums. The Residential Wireman installs, maintains and repairs the electrical systems in homes and other types of residential installations. CITC provides a comprehensive, two-year Electrical curriculum that prepares workers for their “02” electrical journeyman exam.

Note: CITC is transitioning from requiring paper NCCER Carpentry textbooks and NCCERConnect. Carpentry students are now required to purchase NCCERConnect only. NCCERConnect, which includes access to an e-text, will become the primary text materials for class and will be utilized for class and homework assignments. Students will be required to purchase an access code to NCCERConnect on the 1st day of class.

It is a requirement of CITC students to own or have access to a laptop or tablet computer with video, audio, camera, microphone, and wireless network access. Personal student laptop or tablet computer devices will be required in class each day. Additionally, all students will need to have access to a reliable internet source when classes begin in the fall. For additional information on the technical requirements for please contact the CITC office at (425) 454-2482.



APPRENTICESHIP MONTHLY WORK LOGS

Apprenticeship monthly work logs can be submitted to the apprenticeship department via email: **worklogs@citcwa.org**; fax: **(425) 289-0085** (this fax number does not receive texts); mail to the CITC main office: **1930 116th Ave NE Bellevue, WA 98004**.

NCCERCONNECT 2.0 WITH PEARSON eTEXT ACCESS CARD

NCCERConnect 2.0 is an online training program that enhances student learning with a range of visual, auditory, and interactive elements. Your Pearson eText Access Card will give you access to an eBook version of the textbook included in the package.

<https://registration.mypearson.com>



NCCER BOOKSTORE

**20%
OFF**

Enter code
NCCER20
to receive 20% off
your NCCER books

*Includes free shipping
on your first order*

www.nccer.org/bookstore

RESIDENTIAL WIREMAN LEVEL 1

Minimum: 201 hours per year

RESIDENTIAL WIREMAN 101: FALL QUARTER

Students will begin with an orientation for the electrical trade, job site safety. Students will review RCW 19.28 and WAC 29-46B; job site safety practices and standards. Includes OSHA 10 Training. Students will review electrical mathematics, an introduction to electrical circuits, basic electrical theory (Ohms and Kirchhoff's Law), various circuits, and will begin using the National Electrical Code and Washington State rules (RCW/WAC). Emphasis will be placed on following safe working procedures. Lab date schedule will be provided at the beginning of the quarter. Scheduled dates may be adjusted at instructor's discretion.

RESIDENTIAL WIREMAN 102: WINTER QUARTER

Students continue extensive use of the National Electrical Code and Washington State rules (RCW/WAC), learn how to install various device boxes, how to hand bend small diameter conduit, and types & uses of raceways & fittings. Emphasis will be placed on following safe working procedures. Lab date schedule will be provided at the beginning of the quarter. Scheduled dates may be adjusted at instructor's discretion.

RESIDENTIAL WIREMAN 103: SPRING QUARTER

Students learn about the NEC requirements for conductors and cables, begin using basic electrical drawings, review code and installation requirements for residential electrical service, and learn to use multiple pieces of electrical test equipment. Emphasis will be placed on following safe working procedures. Lab date schedule will be provided at the beginning of the quarter. Scheduled dates may be adjusted at instructor's discretion.

BOOKS - RESIDENTIAL WIREMAN LEVEL 1

It is the student's responsibility to have the following book(s) on the first night of class:

REQUIRED TEXT	Soft Cover ISBN	Hard Cover ISBN
NCCER Core Curriculum Trainee Guide, 6th Edition, NCCERConnect 2.0 with eText	Purchase NCCERConnect through https://registration.mypearson.com/	
Electrical Level 1 Trainee Guide, 10th Edition, NCCERConnect 2.0 with eText	Purchase NCCERConnect through https://registration.mypearson.com/	
2020 National Electric Code (NEC)	978-1-4559-2297-0	
Delmar’s Standard Textbook of Electricity, 7th Edition		9781337900348
Washington State Electrical RCW/WACs	Free download available through L&I	
OPTIONAL TEXT		
NCCER Core Curriculum Trainee Guide, 6th Edition	9780137483341	9780137483358
NCCER Electrical Level 1 Trainee Guide, 10th Edition	9780136908531	9780136908654

*Purchase NCCERConnect through <https://registration.mypearson.com/>



All first year classes include
OSHA 10 for Construction



RESIDENTIAL WIREMAN LEVEL 2

Minimum: 201 hours per year

RESIDENTIAL WIREMAN 201: FALL QUARTER

Students will complete a review of math concepts and code from the previous year; then discuss alternating current and how to apply Ohm's law; AC and DC motors through theory & application; electric lighting, and related NEC articles and RCW/WAC rules. Emphasis will be placed on following safe working procedures. Lab date schedule will be provided at the beginning of the quarter. Scheduled dates may be adjusted at instructor's discretion.

RESIDENTIAL WIREMAN 202: WINTER QUARTER

Students will discuss and perform conduit bending; sizing and installing pull and junction boxes; conductor installations; cable trays, and related NEC articles and RCW/WAC rules. Emphasis will be placed on following safe working procedures. Lab date schedule will be provided at the beginning of the quarter. Scheduled dates may be adjusted at instructor's discretion.

RESIDENTIAL WIREMAN 203: SPRING QUARTER

Students will learn about conductor terminations & splices; will discuss and perform grounding & bonding; principles, selection and installation of circuit breakers & fuses; control systems and fundamental concepts; and related NEC articles and RCW/WAC rules. Review of green building best practices and alternative energy sources will also be included. Emphasis will be placed on following safe working procedures. Lab date schedule will be provided at the beginning of the quarter. Scheduled dates may be adjusted at instructor's discretion.

BOOKS - RESIDENTIAL WIREMAN LEVEL 2

It is the student's responsibility to have the following book(s) on the first night of class:

REQUIRED TEXT	Soft Cover ISBN	Hard Cover ISBN
Electrical Level 2 Trainee Guide, 10th Edition, NCCERConnect 2.0 with eText	Purchase NCCERConnect through https://registration.mypearson.com/	
Delmar’s Standard Textbook of Electricity, 7th Edition		9781337900348
2020 National Electric Code (NEC)	978-1-4559-2297-0	
Soares Book on Grounding and Bonding, 14th Edition (NEC 2020)		9781890659851
Washington State Electrical RCW/WACs	Free download available through L&I	
OPTIONAL TEXT		
NCCER Electrical Level 2 Trainee Guide, 10th Edition	9780136897828	9780136897743

*Purchase NCCERConnect through <https://registration.myperson.com/>

Electrical: Residential Wireman Instructors

As a part of our dedication and commitment to training, we take pride in delivering top quality instructors. CITC's instructors are highly skilled journey-level workers who bring their knowledge and years of trade experience into the classroom. All CITC instructors have been certified certification by the National Center for Construction Education and Research.

See list under **Commercial Inside Wireman**

Residential Wireman Schedule & Tuition

Eastern Washington Region

RESIDENTIAL WIREMAN LEVEL 1								
Pasco	101	Fall	13 weeks	81 hours	Fri/Sat	8a-5p	September 16 – December 10 + Assignments	Tuition: \$1,325
Pasco	102	Wtr	8 weeks	60 hours	Fri/Sat	8a-5p	January 13 – March 11 + Assignments	Tuition: \$1,325
Pasco	103	Spr	9 weeks	60 hours	Fri/Sat	8a-5p	April 14 – June 10 + Assignments	Tuition: \$1,325
Spokane 1A	101	Fall	13 weeks	81 hours	Fri/Sat	8a-5p	September 9 – December 3 + Assignments	Tuition: \$1,325
Spokane 1A	102	Wtr	8 weeks	60 hours	Fri/Sat	8a-5p	January 13 – March 11 + Assignments	Tuition: \$1,325
Spokane 1A	103	Spr	9 weeks	60 hours	Fri/Sat	8a-5p	April 14 – June 3 + Assignments	Tuition: \$1,325
Spokane 1B	101	Fall	12 weeks	81 hours	Fri/Sat	8a-5p	September 23 – December 17 + Assignments	Tuition: \$1,325
Spokane 1B	102	Wtr	8 weeks	60 hours	Fri/Sat	8a-5p	January 27 – March 25 + Assignments	Tuition: \$1,325
Spokane 1B	103	Spr	9 weeks	60 hours	Fri/Sat	8a-5p	April 28 – June 17 + Assignments	Tuition: \$1,325
Spokane 1C	101	Fall	12 weeks	81 hours	Fri/Sat	8a-5p	September 16 – December 10 + Assignments	Tuition: \$1,325
Spokane 1C	102	Wtr	8 weeks	60 hours	Fri/Sat	8a-5p	January 20 – March 18 + Assignments	Tuition: \$1,325
Spokane 1C	103	Spr	9 weeks	60 hours	Fri/Sat	8a-5p	April 21 – June 10 + Assignments	Tuition: \$1,325
RESIDENTIAL WIREMAN LEVEL 2								
Pasco	201	Fall	13 weeks	81 hours	Fri/Sat	8a-5p	September 23 – December 17 + Assignments	Tuition: \$1,325
Pasco	202	Wtr	8 weeks	60 hours	Fri/Sat	8a-5p	January 27 – March 25 + Assignments	Tuition: \$1,325
Pasco	203	Spr	9 weeks	60 hours	Fri/Sat	8a-5p	April 28 – June 17 + Assignments	Tuition: \$1,325
Spokane 2A	201	Fall	13 weeks	81 hours	Fri/Sat	8a-5p	September 9 – December 3 + Assignments	Tuition: \$1,325
Spokane 2A	202	Wtr	8 weeks	60 hours	Fri/Sat	8a-5p	January 6 – March 4 + Assignments	Tuition: \$1,325
Spokane 2A	203	Spr	9 weeks	60 hours	Fri/Sat	8a-5p	April 7 – June 3 + Assignments	Tuition: \$1,325
Spokane 2B	201	Fall	13 weeks	81 hours	Fri/Sat	8a-5p	September 23 – December 17 + Assignments	Tuition: \$1,325
Spokane 2B	202	Wtr	8 weeks	60 hours	Fri/Sat	8a-5p	January 20 – March 18 + Assignments	Tuition: \$1,325
Spokane 2B	203	Spr	9 weeks	60 hours	Fri/Sat	8a-5p	April 21 – June 17 + Assignments	Tuition: \$1,325

Western Washington Region

RESIDENTIAL WIREMAN LEVEL 1								
Bellevue 1A	101	Fall	14 weeks	87 hours	Mon/Wed	5:30p-9p	September 12 – December 14	Tuition: \$1,750
Bellevue 1A	102	Wtr	9 weeks	63 hours	Mon/Wed	5:30p-9p	January 9 – March 22	Tuition: \$1,750
Bellevue 1A	103	Spr	8 weeks	51 hours	Mon/Wed	5:30p-9p	April 10 – May 24	Tuition: \$1,750
Bellevue 1B	101	Fall	14 weeks	87 hours	Tue/Thu	5:30p-9p	September 13 – December 13	Tuition: \$1,750
Bellevue 1B	102	Wtr	8 weeks	63 hours	Tue/Thu	5:30p-9p	January 10 – March 13	Tuition: \$1,750
Bellevue 1B	103	Spr	7 weeks	51 hours	Tue/Thu	5:30p-9p	April 18 – May 18 + 2 Saturdays	Tuition: \$1,750
Bellevue 1C	101	Fall	14 weeks	81 hours	Fri/Sat	8a-5p	September 9 – December 3 + Assignments	Tuition: \$1,750
Bellevue 1C	102	Wtr	9 weeks	60 hours	Fri/Sat	8a-5p	January 6 – March 4 + Assignments	Tuition: \$1,750
Bellevue 1C	103	Spr	8 weeks	60 hours	Fri/Sat	8a-5p	April 7 – June 3 + Assignments	Tuition: \$1,750
Bellingham	101	Fall	13 weeks	86 hours	Mon/Wed	5:30p-9p	September 19 – December 5 + 2 Saturdays	Tuition: \$1,750
Bellingham	102	Wtr	9 weeks	65 hours	Mon/Wed	5:30p-9p	January 9 – March 1 + 2 Saturdays	Tuition: \$1,750
Bellingham	103	Spr	6 weeks	50 hours	Mon/Wed	5:30p-9p	April 17 – May 17 + 2 Saturdays	Tuition: \$1,750
Marysville 1A	101	Fall	14 weeks	87 hours	Mon/Wed	5:30p-9p	September 12 – December 14	Tuition: \$1,750
Marysville 1A	102	Wtr	9 weeks	63 hours	Mon/Wed	5:30p-9p	January 9 – March 22	Tuition: \$1,750
Marysville 1A	103	Spr	8 weeks	51 hours	Mon/Wed	5:30p-9p	April 10 – May 24	Tuition: \$1,750
Marysville 1B	101	Fall	12 weeks	81 hours	Fri/Sat	8a-5p	September 9 – December 3 + Assignments	Tuition: \$1,750
Marysville 1B	102	Wtr	8 weeks	60 hours	Fri/Sat	8a-5p	January 6 – March 4 + Assignments	Tuition: \$1,750

Residential Wireman Schedule & Tuition *continued*

Western Washington Region *continued*

Marysville 1B	103	Spr	9 weeks	60 hours	Fri/Sat	8a-5p	April 7 – June 3 + Assignments	Tuition: \$1,750
Tacoma 1A	101	Fall	14 weeks	87 hours	Mon/Wed	5:30p-9p	September 12 – December 14	Tuition: \$1,750
Tacoma 1A	102	Wtr	9 weeks	63 hours	Mon/Wed	5:30p-9p	January 9 – March 22	Tuition: \$1,750
Tacoma 1A	103	Spr	8 weeks	51 hours	Mon/Wed	5:30p-9p	April 10 – May 24	Tuition: \$1,750
Tacoma 1B	101	Fall	14 weeks	87 hours	Tue/Thu	5:30p-9p	September 13 – December 13	Tuition: \$1,750
Tacoma 1B	102	Wtr	9 weeks	63 hours	Tue/Thu	5:30p-9p	January 10 – March 13	Tuition: \$1,750
Tacoma 1B	103	Spr	8 weeks	51 hours	Tue/Thu	5:30p-9p	April 18 – May 18 + 2 Saturdays	Tuition: \$1,750
Vancouver	101	Fall	14 weeks	87 hours	Mon/Wed	5:30p-9p	September 12 – December 14	Tuition: \$1,750
Vancouver	102	Wtr	9 weeks	63 hours	Mon/Wed	5:30p-9p	January 9 – March 22	Tuition: \$1,750
Vancouver	103	Spr	8 weeks	51 hours	Mon/Wed	5:30p-9p	April 10 – May 24	Tuition: \$1,750

RESIDENTIAL WIREMAN LEVEL 2

Bellevue 2A	201	Fall	14 weeks	87 hours	Mon/Wed	5:30p-9p	September 12 – December 14	Tuition: \$1,750
Bellevue 2A	202	Wtr	9 weeks	63 hours	Mon/Wed	5:30p-9p	January 9 – March 22	Tuition: \$1,750
Bellevue 2A	203	Spr	8 weeks	51 hours	Mon/Wed	5:30p-9p	April 10 – May 24	Tuition: \$1,750
Bellevue 2B	201	Fall	14 weeks	87 hours	Tue/Thu	5:30p-9p	September 13 – December 13	Tuition: \$1,750
Bellevue 2B	202	Wtr	9 weeks	63 hours	Tue/Thu	5:30p-9p	January 10 – March 13	Tuition: \$1,750
Bellevue 2B	203	Spr	8 weeks	51 hours	Tue/Thu	5:30p-9p	April 18 – May 18 + 2 Saturdays	Tuition: \$1,750
Bellingham	201	Fall	12 weeks	86 hours	Tue/Thu	5:30p-9p	September 20 – December 6 + 2 Saturdays	Tuition: \$1,750
Bellingham	202	Wtr	7 weeks	65 hours	Tue/Thu	5:30p-9p	January 10 – February 28 + 2 Saturdays	Tuition: \$1,750
Bellingham	203	Spr	6 weeks	50 hours	Tue/Thu	5:30p-9p	April 18 – May 18 + 2 Saturdays	Tuition: \$1,750
Marysville	201	Fall	14 weeks	81 hours	Fri/Sat	8a-5p	September 16 – December 10 + Assignments	Tuition: \$1,750
Marysville	202	Wtr	9 weeks	60 hours	Fri/Sat	8a-5p	January 13 – March 11 + Assignments	Tuition: \$1,750
Marysville	203	Spr	8 weeks	60 hours	Fri/Sat	8a-5p	April 14 – June 10 + Assignments	Tuition: \$1,750
Tacoma 2A	201	Fall	14 weeks	87 hours	Mon/Wed	5:30p-9p	September 12 – December 14	Tuition: \$1,750
Tacoma 2A	202	Wtr	9 weeks	63 hours	Mon/Wed	5:30p-9p	January 9 – March 22	Tuition: \$1,750
Tacoma 2A	203	Spr	8 weeks	51 hours	Mon/Wed	5:30p-9p	April 10 – May 24	Tuition: \$1,750
Tacoma 2B	201	Fall	14 weeks	87 hours	Tue/Thu	5:30p-9p	September 13 – December 13	Tuition: \$1,750
Tacoma 2B	202	Wtr	9 weeks	63 hours	Tue/Thu	5:30p-9p	January 10 – March 13	Tuition: \$1,750
Tacoma 2B	203	Spr	8 weeks	51 hours	Tue/Thu	5:30p-9p	April 18 – May 18 + 2 Saturdays	Tuition: \$1,750
Vancouver	201	Fall	14 weeks	87 hours	Mon/Wed	5:30p-9p	September 12 – December 14	Tuition: \$1,750
Vancouver	202	Wtr	9 weeks	63 hours	Mon/Wed	5:30p-9p	January 9 – March 22	Tuition: \$1,750
Vancouver	203	Spr	8 weeks	51 hours	Mon/Wed	5:30p-9p	April 10 – May 24	Tuition: \$1,750



All first year classes include
OSHA 10 for Construction

